

ERPsim

Start of Term January 2026

Please Note

This webcast is being recorded and will be made available on the ERPsim website. Please be aware that questions you ask or discussions you participate in will be recorded as a part of the presentation.

By attending this online event you are giving your permission to being recorded. Participant names / photos / video (if connected to event via webcam) may be shared. If you do not wish to be recorded, please disconnect from the webcast at this time.

This presentation contain references to products of SAP SE, Dietmar-Hopp-Allee 16, 69190 Walldorf, Germany. The names of these products are registered and/or unregistered trademarks of SAP SE. SAP SE is neither the author nor the publisher of this presentation and is not responsible for its content.

Webinar

Online | January 13, 2026

ERPsimLab
HEC MONTRÉAL

Serious games to learn enterprise
systems and business analytics

Agenda

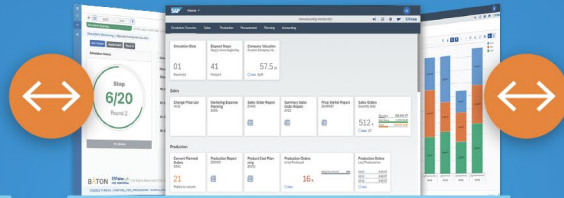
1. Welcome
2. ERPsim
 - ▶ Latest Features
 - ▶ Running ERPsim Games Like A Pro!
3. Business Builders
 - ▶ Enhancements
 - ▶ New Games
4. Additional Updates
5. Live Q&A

Learning Solutions from the ERPsim Lab

ERPsim Simulator

VIRTUAL BUSINESS

- ✓ Automation of administrative tasks
- ✓ Simulation of customer and vendor behaviors
- ✓ Simulation of passing of time



ERP SYSTEM

Available for
SAP S/4HANA



ERPsim Games



MANUFACTURING



LOGISTICS

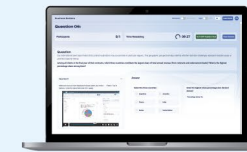


PARTICIPANTS

- ✓ Business decisions
- ✓ Business analytics
- ✓ Engagement through competition

Business Builders

Gaming Platform



SAP Analytics Cloud



Build Own Visualizations



Supply Chain Resilience

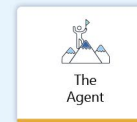


International Expansion



Sustainability Portfolio

Use Pre-built Visualizations



The Agent

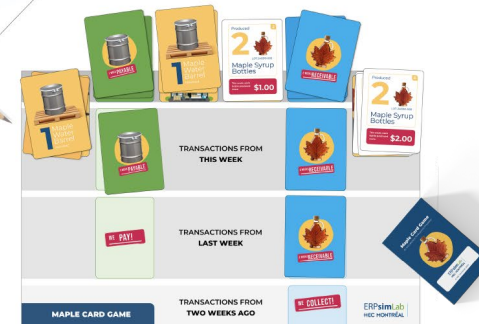


The Maple Heir



The Process Detective

Maple Card Game



What's New?

ERPsim

Analytics

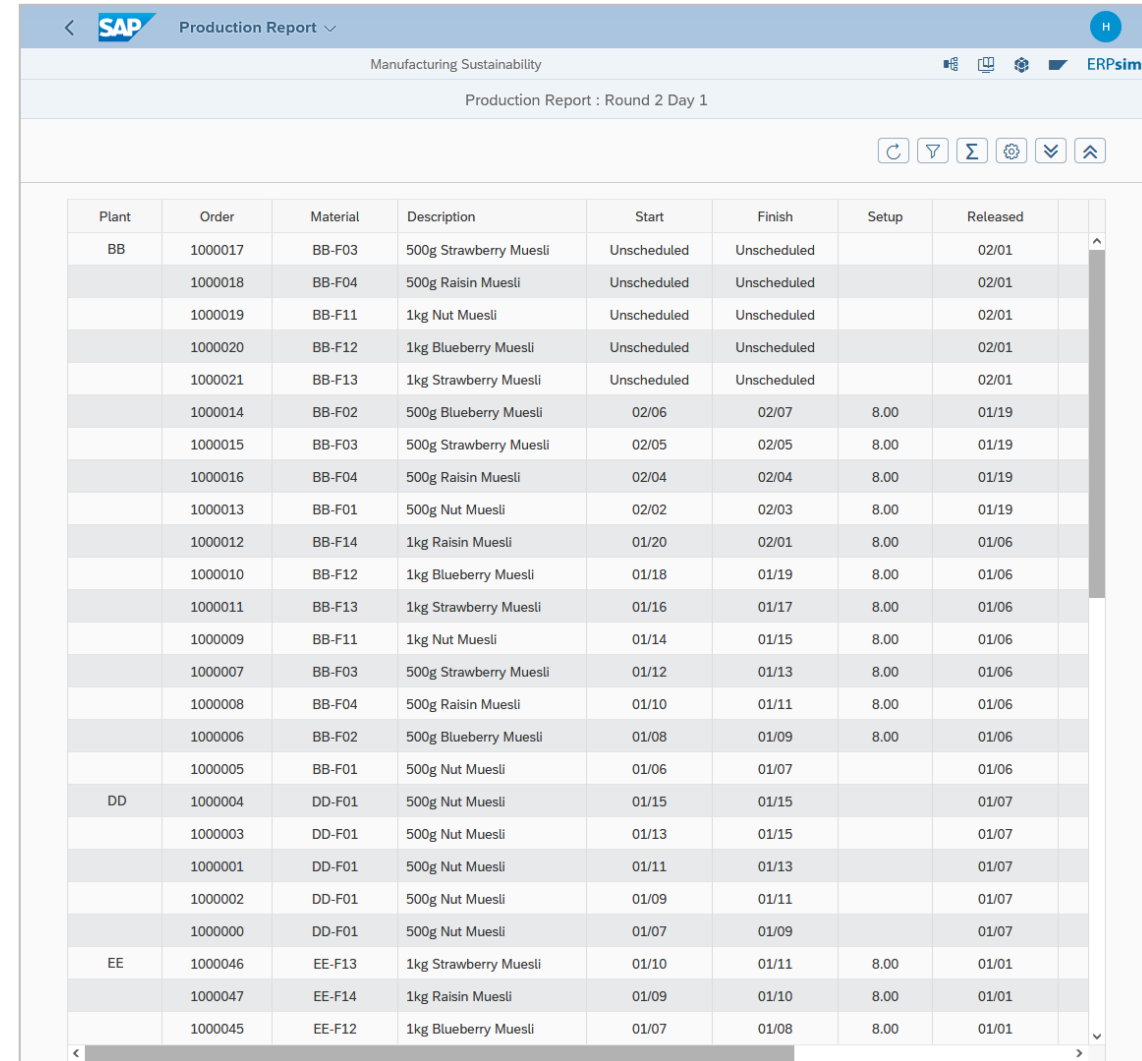
Custom ALV-grid reports converted to Fiori

Reworked OData services for better performance

General

Bug fixes and “under the hood” improvements

New simulator modules



The screenshot shows the SAP Fiori app interface for the 'Production Report' (Transaction ZCOOIS). The header includes the SAP logo, 'Production Report', and 'Manufacturing Sustainability'. The main title is 'Production Report : Round 2 Day 1'. Below the title are several icons for report actions. The table displays production data with columns: Plant, Order, Material, Description, Start, Finish, Setup, and Released. The data is organized by plant (BB, DD, EE) and lists various materials and their production schedules.

Plant	Order	Material	Description	Start	Finish	Setup	Released
BB	1000017	BB-F03	500g Strawberry Muesli	Unscheduled	Unscheduled		02/01
	1000018	BB-F04	500g Raisin Muesli	Unscheduled	Unscheduled		02/01
	1000019	BB-F11	1kg Nut Muesli	Unscheduled	Unscheduled		02/01
	1000020	BB-F12	1kg Blueberry Muesli	Unscheduled	Unscheduled		02/01
	1000021	BB-F13	1kg Strawberry Muesli	Unscheduled	Unscheduled		02/01
	1000014	BB-F02	500g Blueberry Muesli	02/06	02/07	8.00	01/19
	1000015	BB-F03	500g Strawberry Muesli	02/05	02/05	8.00	01/19
	1000016	BB-F04	500g Raisin Muesli	02/04	02/04	8.00	01/19
	1000013	BB-F01	500g Nut Muesli	02/02	02/03	8.00	01/19
	1000012	BB-F14	1kg Raisin Muesli	01/20	02/01	8.00	01/06
DD	1000010	BB-F12	1kg Blueberry Muesli	01/18	01/19	8.00	01/06
	1000011	BB-F13	1kg Strawberry Muesli	01/16	01/17	8.00	01/06
	1000009	BB-F11	1kg Nut Muesli	01/14	01/15	8.00	01/06
	1000007	BB-F03	500g Strawberry Muesli	01/12	01/13	8.00	01/06
	1000008	BB-F04	500g Raisin Muesli	01/10	01/11	8.00	01/06
	1000006	BB-F02	500g Blueberry Muesli	01/08	01/09	8.00	01/06
	1000005	BB-F01	500g Nut Muesli	01/06	01/07		01/06
	1000004	DD-F01	500g Nut Muesli	01/15	01/15		01/07
	1000003	DD-F01	500g Nut Muesli	01/13	01/15		01/07
	1000001	DD-F01	500g Nut Muesli	01/11	01/13		01/07
EE	1000002	DD-F01	500g Nut Muesli	01/09	01/11		01/07
	1000000	DD-F01	500g Nut Muesli	01/07	01/09		01/07
	1000046	EE-F13	1kg Strawberry Muesli	01/10	01/11	8.00	01/01
	1000047	EE-F14	1kg Raisin Muesli	01/09	01/10	8.00	01/01
	1000045	EE-F12	1kg Blueberry Muesli	01/07	01/08	8.00	01/01

Transaction ZCOOIS (Production Report)
Converted to a Fiori app

Conversion of WEBGUI Reports to Fiori Applications

What's New?

Conversion of WEBGUI Reports to Fiori Applications

SAP Production Report

Manufacturing Sustainability

Production Report : Round 2 Day 1

Plant	Order	Material	Description	Start	Finish	Setup	Released
BB	1000017	BB-F03	500g Strawberry Muesli	Unscheduled	Unscheduled		02/01
	1000018	BB-F04	500g Raisin Muesli	Unscheduled	Unscheduled		02/01
	1000019	BB-F11	1kg Nut Muesli	Unscheduled	Unscheduled		02/01
	1000020	BB-F12	1kg Blueberry Muesli	Unscheduled	Unscheduled		02/01
	1000021	BB-F13	1kg Strawberry Muesli	Unscheduled	Unscheduled		02/01
	1000014	BB-F02	500g Blueberry Muesli	02/06	02/07	8.00	01/19
	1000015	BB-F03	500g Strawberry Muesli	02/05	02/05	8.00	01/19
	1000016	BB-F04	500g Raisin Muesli	02/04	02/04	8.00	01/19
	1000013	BB-F01	500g Nut Muesli	02/02	02/03	8.00	01/19
	1000012	BB-F14	1kg Raisin Muesli	01/20	02/01	8.00	01/06
	1000010	BB-F12	1kg Blueberry Muesli	01/18	01/19	8.00	01/06
	1000011	BB-F13	1kg Strawberry Muesli	01/16	01/17	8.00	01/06
DD	1000009	BB-F11	1kg Nut Muesli	01/14	01/15	8.00	01/06
	1000007	BB-F03	500g Strawberry Muesli	01/12	01/13	8.00	01/06
	1000008	BB-F04	500g Raisin Muesli	01/10	01/11	8.00	01/06
	1000006	BB-F02	500g Blueberry Muesli	01/08	01/09	8.00	01/06
	1000005	BB-F01	500g Nut Muesli	01/06	01/07		01/06
	1000004	DD-F01	500g Nut Muesli	01/15	01/15		01/07
	1000003	DD-F01	500g Nut Muesli	01/13	01/15		01/07
	1000001	DD-F01	500g Nut Muesli	01/11	01/13		01/07
EE	1000002	DD-F01	500g Nut Muesli	01/09	01/11		01/07
	1000000	DD-F01	500g Nut Muesli	01/07	01/09		01/07
	1000046	EE-F13	1kg Strawberry Muesli	01/10	01/11	8.00	01/01
	1000047	EE-F14	1kg Raisin Muesli	01/09	01/10	8.00	01/01
	1000045	EE-F12	1kg Blueberry Muesli	01/07	01/08	8.00	01/01

What's New?

Core Game Enhancements

Universal Starting Inventory

- All games can now start with **inventory** to accelerate sales process in classroom settings

Maple Game Lead Time Fix

- Purchase orders made on day 1 no longer incur **full lead time**
(helps students who forgot to complete setup before game starts)

Automated Period Management

- MD61 columns automatically adjust when running ZSTART in new months :
Independent requirements shift to appropriate time periods

Transaction Flexibility (enabled via ZSTART's options)

- Manufacturing: Can replace transaction **FB50** with **ZFB50**
- Logistics: Can enable **ZRPA** (AI-based Forecasts)

What's New?

New Modules for Enhanced Game Customization

Maple Game Configuration Modules

"Starter Scenario Script" Module Now **optional** (previously mandatory)

- Deactivate to eliminate starting inventory

"Replenish Script" Module *Disabled by default*

- Automatically orders 1,500 units of each product at round end
- Units received at start of next round

Logistics Game Configuration Modules

"Warehousing Unit Costs" Module *Disabled by default*

- €0.10 daily fee per inventory unit

"Truck Load Constraints" Module *Disabled by default*

- Internal transfers via ZMB1B now respect 750-unit truck capacity limits, requiring multiple trucks for larger transfers

What's New?

Data Access & Analytics Improvements

Dual OData Service Architecture

OData Simulation Service (always active)

- Fewer views and elements for **optimized performance**
- URL: *https://<system>/odata/<client>*

OData Analytics Service (optional - activated via ZODATA)









- Additional views for **in-depth analytics** after simulation
- URL: *https://<system>/analytics/<client>*

Enhanced Instructor Controls

Option to uncheck all company sets in ZODATA

- Prevents students from accessing **any OData data**
- Complete lockdown capability for controlled environments

ERPsims Logistics Sustainability Random Disruptions

1)		Cold Spell	<ul style="list-style-type: none">Higher carbon emissions per unit of raw material purchasedLower storage energy
2)		Carbon Decree	<ul style="list-style-type: none">Higher carbon taxLower energy footprint
3)		Supplier Disruption	<ul style="list-style-type: none">Less-optimal sourcing and routingHigher carbon emissions for all products purchased
4)		Hub Gridlock	<ul style="list-style-type: none">Higher carbon emissions from direct salesIncreased emissions from procurement and internal transfers
5)		System Glitch	<ul style="list-style-type: none">Certain reports unavailableRequires consultant support or alternative data sources for decision-making
6)		Data Breach	<ul style="list-style-type: none">Team data exposed to competitorsCompetitors can access and compare strategies
7)		Flash Flood	<ul style="list-style-type: none">Entire warehouse inventory lostRecovery efforts needed to reduce financial impact
8)		AI Innovation	<ul style="list-style-type: none">New AI tool developed by ITUse it to enhance planning decisions

ZCONTROL: Disruptors Admin

< **SAP** ERPsim Control Panel

> DEV (301) ▾

System ▾ Help ▾ ⚙ ▾

Exit

Refresh Data

OverviewCarbon ImpactSuppliersGoods MovementsOverstockOverheadLogisticsReports ManagementDisruptions (BETA)

Apply Disruptions

1 - Cold Spell

- Increase carbon emissions for 2 products
- Decrease carbon emissions for overstocking.
- Decrease carbon emissions for purchased energy.

2 - Carbon Decree

- Increase carbon tax.
- Decrease carbon emissions for purchased energy.

3 - Supplier Disruption

- Increase carbon emissions per delivery.
- Increase carbon emissions per unit purchased.

4 - Hub Gridlock

- Increase carbon emissions for internal transfers.
- Increase carbon emissions for suppliers deliveries.
- Increase carbon emissions for sales from the central warehouse.

5 - System Glitch

- Multiple reports locked behind paywall.

6 - Data Breach

- OData access to all teams' data.

7 - Flash Flood

- Products scrapped from random storage location.

8 - AI Innovation

- Grant access to transaction ZRPA.

Save ModuleCancel

Logistics Sustainability Scenario

ZCONTROL: Disruptors Admin

< **SAP** ERPsim Control Panel

> DEV (301) ▾

System ▾ Help ▾ ⚙ ▾

Exit

Refresh Data

OverviewCarbon ImpactSuppliersGoods MovementsOverstockOverheadLogisticsReports ManagementProductionInvestmentsDisruptions (BETA)

Apply Disruptions

1 - Cold Spell

- Increase carbon emissions for 2 raw materials.
- Decrease carbon emissions for overstocking.
- Decrease carbon emissions for purchased energy.

2 - Heat Wave

- Increase carbon emissions for 2 raw materials.
- Increase carbon emissions for overstocking.
- Increase carbon emissions for purchased energy.

3 - Supplier Disruption

- Increase carbon emissions per delivery.
- Increase carbon emissions per unit purchased.

4 - Carbon Decree

- Increase carbon tax.
- Decrease carbon emissions for purchased energy.

5 - Energy Recovery

- Increase carbon emissions for setup time.
- Decrease carbon emissions per unit produced.
- Decrease carbon emissions for purchased energy.

6 - Hub Relocation

- Increase/decrease carbon emissions for internal transfers.
- Increase carbon emissions for sales from the central warehouse.

Save ModuleCancel

Manufacturing Sustainability Scenario

Running ERPsim Games Like A Pro!

Running ERPsim Games Like a Pro!

Pre-Game Setup

Up to 2 days prior to launching the game

A few steps must be completed before getting to the classroom, but they may take time. Make sure to allow for enough time before game day!

- System Provisioning (and testing it!)
- Decide which scenario to play, its duration, and the format (in-person, at a distance, ...)
- Set up a class in the Class Management system
- Have your students register for their account and have access to content

Running ERPsim Games Like a Pro!

Game Setup and Launch

**24 hours to 15 minutes
prior to launching the game**

Game setup does not have to be done as you are starting the game; you can do some preparation ahead of time. Here are some steps that can be completed in advance.

- Make the documentation available
- Prepare the SAP client
 - ZSTART (configure the scenario)
 - ZUSER (unlock and set initial passwords)
- Run game setup in the simulator's console
 - Select scenario
 - Pick your class
 - Select teams

Running ERPsim Games Like a Pro!

Coaching and Troubleshooting

The game is running. Students are learning and are having a good time (hopefully!). Here's a few things to consider.

Between rounds

- Use and discuss the raking report to give some hints for improvement

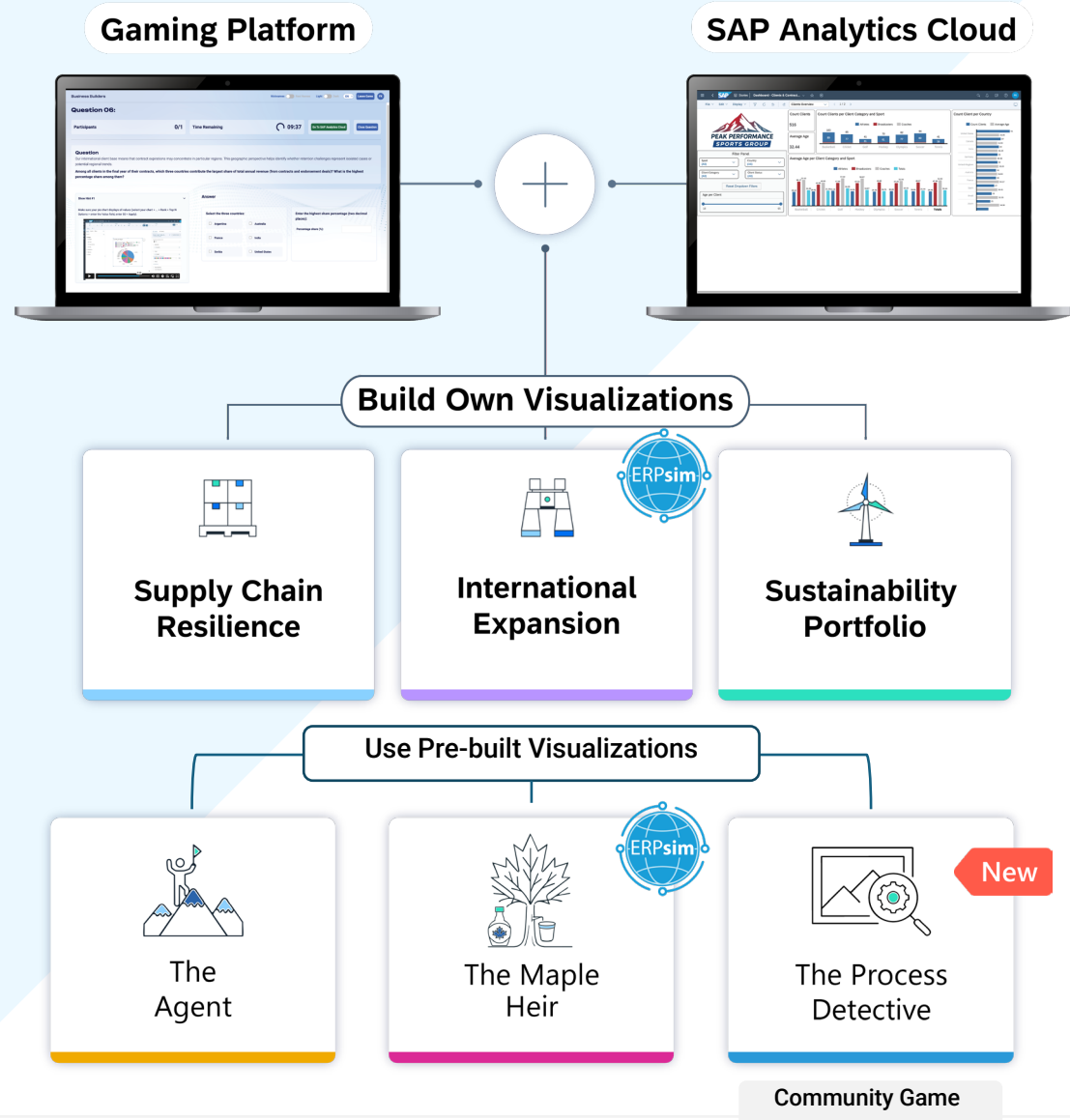
During rounds

- Have a look at the instructor's reports to identify teams in difficulty
- If playing the Manufacturing scenario, monitor COGI errors
- And remember, you can pause the game at anytime!

Business Builders

Business Builders

Business Builders is a **scenario-based analytics competition** where students use **SAP Analytics Cloud** to answer business questions, justify decisions, and develop visual analytics competence.





STEP INTO THE GAME. MASTER THE BUSINESS.

THE AGENT

OLIVIER CAYA'S SPORT MANAGEMENT GAME
FOR BUSINESS BUILDERS

HEC Montréal and ERPsim Lab present an ERPsim Lab production in collaboration with SAP

— PRODUCED BY — DIRECTED BY — DEVELOPED AND CO-DESIGNED BY —

PIERRE-MAJORIQUE LÉGER OLIVIER CAYA GILBERT BABIN FÉLIX GAUDET KARL-DAVID BOUTIN JEAN-FRANÇOIS MICHON

SUPPORTED BY

FOROUGH KARIMI-ALAGHEHBAND, SERGIO DE LA CRUZ, RÉDA JAMALI, KRISTIE AU, SHABNAM HAJIAN, AUDREY LAFLAMME, SELIM KHEMAKHEM, AND MARIKO DUPUIS. IN THE ROLE OF "THE AGENT" KRISTIE AU.

ERPsimLab | Serious games to learn enterprise systems and business analytics

HEC MONTRÉAL



STEP INTO THE GAME. MASTER THE BUSINESS.

THE MAPLE HEIR

MICHAEL BLIEMEL'S BUSINESS FUNDAMENTALS
GAME FOR BUSINESS BUILDERS

HEC Montréal and ERPsim Lab present an ERPsim Lab production in collaboration with SAP

— PRODUCED BY — DIRECTED BY — DEVELOPED AND CO-DESIGNED BY —

PIERRE-MAJORIQUE LÉGER MICHAEL BLIEMEL GILBERT BABIN MARIE-CLAUDE TRUDEL ANA DUFF FÉLIX GAUDET KARL-DAVID BOUTIN JEAN-FRANÇOIS MICHON

SUPPORTED BY

FOROUGH KARIMI-ALAGHEHBAND, SERGIO DE LA CRUZ, RÉDA JAMALI, KRISTIE AU, SHABNAM HAJIAN, AUDREY LAFLAMME, SELIM KHEMAKHEM, AND MARIKO DUPUIS. IN THE ROLE OF "THE MAPLE HEIR" GABRIEL HARDY JOSEPH.

ERPsimLab | Serious games to learn enterprise systems and business analytics

HEC MONTRÉAL

COMING IN A CLASS NEAR YOU:
NOVEMBER 2025

STEP INTO THE GAME. MASTER THE BUSINESS.

THE PROCESS DETECTIVE

HEC Montréal and ERPsim Lab presents our first "Business Builders Community Game"

— DIRECTED BY — WITH THE COLLABORATION OF — DEVELOPED AND CO-DESIGNED BY —

PIERRE-MAJORIQUE LÉGER	SIMHA MAGAL	MEAGAN LUTTENTON -KNOLL	VISHAL SHAH	VAFEIADIS CHARALAMPOS	OLIVIER CAYA	GWAMAKA MWALEMBA	FÉLIX GAUDET-LAFONTAINE, KARL-DAVID BOUTIN, JEAN-FRANÇOIS MICHON AND KRISTIE AU
---------------------------	----------------	-------------------------------	----------------	--------------------------	-----------------	---------------------	---

— SUPPORTED BY —
FOROUGH KARIMI ALAGHEHBAND, SERGIO DE LA CRUZ, RÉDA JAMALI, SHABNAM HAJIAN, PATRICK-OLIVIER WODJA TÉTÉ.

ERPsim In-A-Box

ERPsim

© 2004-2026, ERPsim Lab, HEC Montréal.

ERPsim In-A-Box

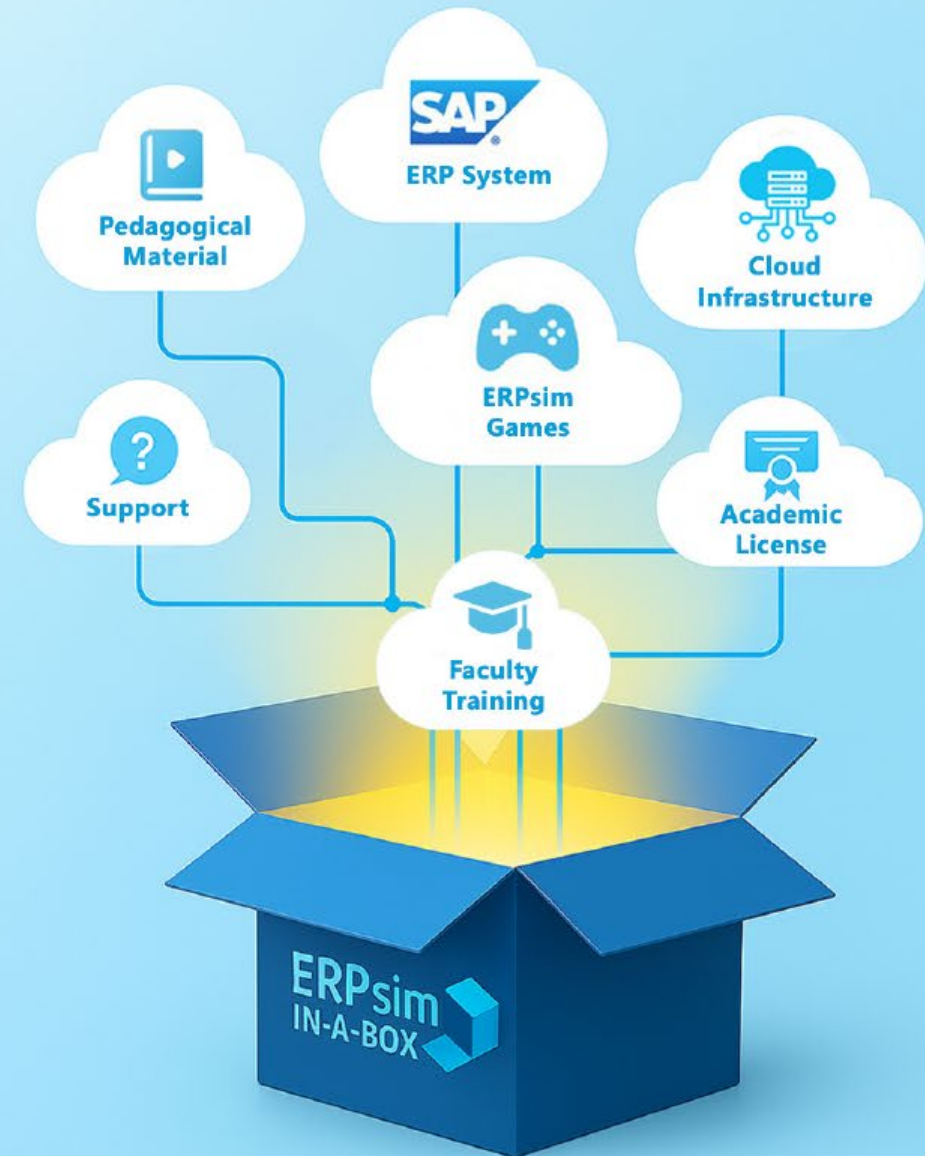
Cloud Hosted Solution to Enhance Your Teaching with Gamified Business Simulations

- ✓ Dedicated SAP System
- ✓ 100% Web-based
- ✓ Easy to Learn and Use
- ✓ Ready to Run
- ✓ Zero Complexity
- ✓ No Contract




Everything you need for full integration into existing curricula (Per-Course) or use for bootcamps, competitions (Per-Event).

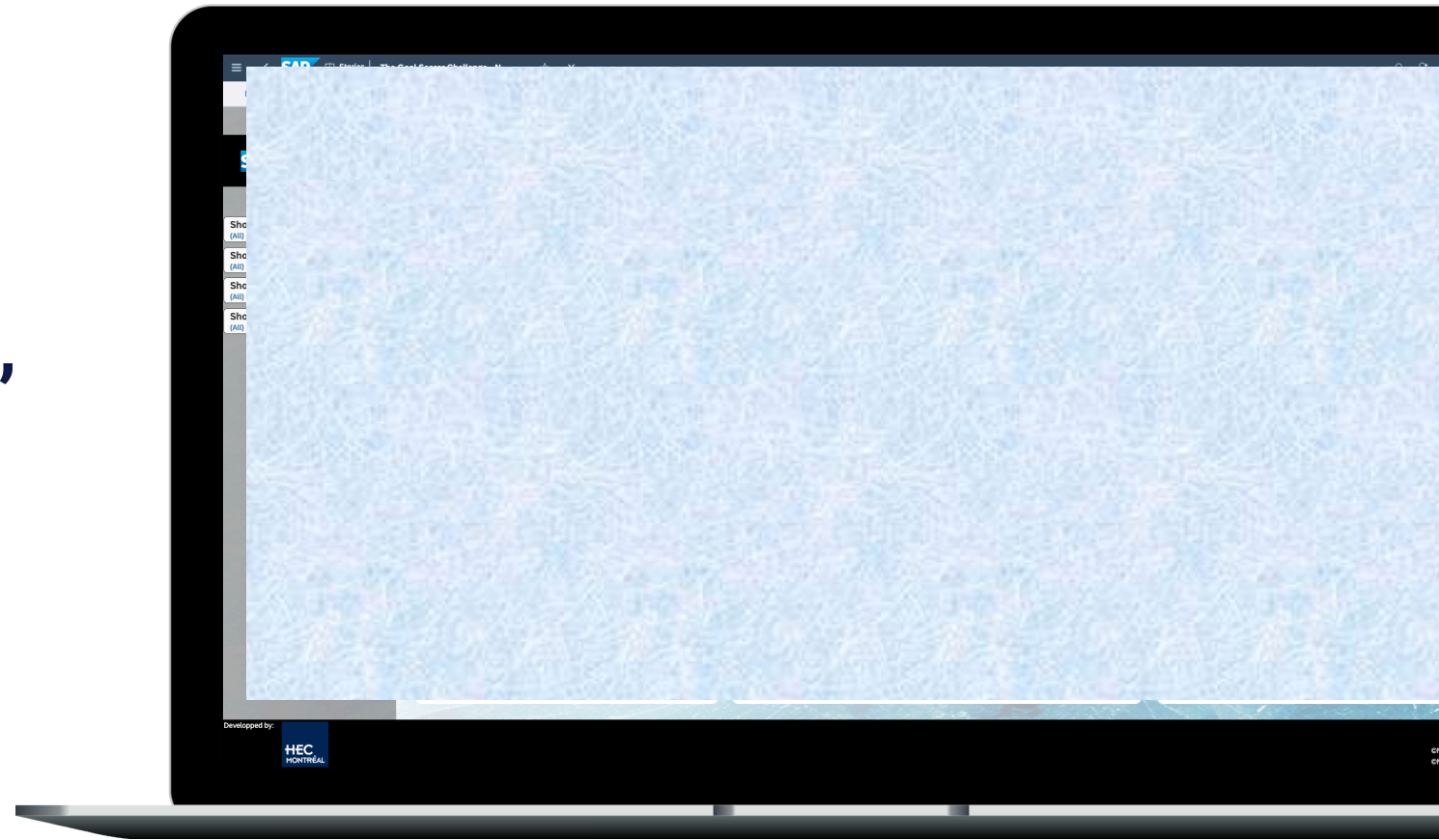
Contact us for pricing and details!



Business Builders: Early Access Program

New in 2026

Business Builders
“The  Analyst”
in collaboration with
the  and SAP



The Analyst EAP criteria

- Accredited Business Builders Instructor
- Fan of Sports
- Teaching Data Visualization / Storytelling
- Available for a “Get Ready to Teach in 90 minutes” session in January
- Commit to try it in class before March 31, 2026
- E-mail us: businessbuilders@hec.ca



ERPsim NA Competition 2026

Friday, March 27, 2026

10 am EDT

Register Now!



ERPsim LAC Competition 2026

Friday, May 15, 2026

10 am EDT

[Register Now!](#)



ERPsim EMEA Competition 2026

Friday, May 22, 2026

2 pm CET

Register Now!



ERPsimLab
HEC MONTRÉAL

ERPsim Lab User Group Meeting 2026

June 8-10

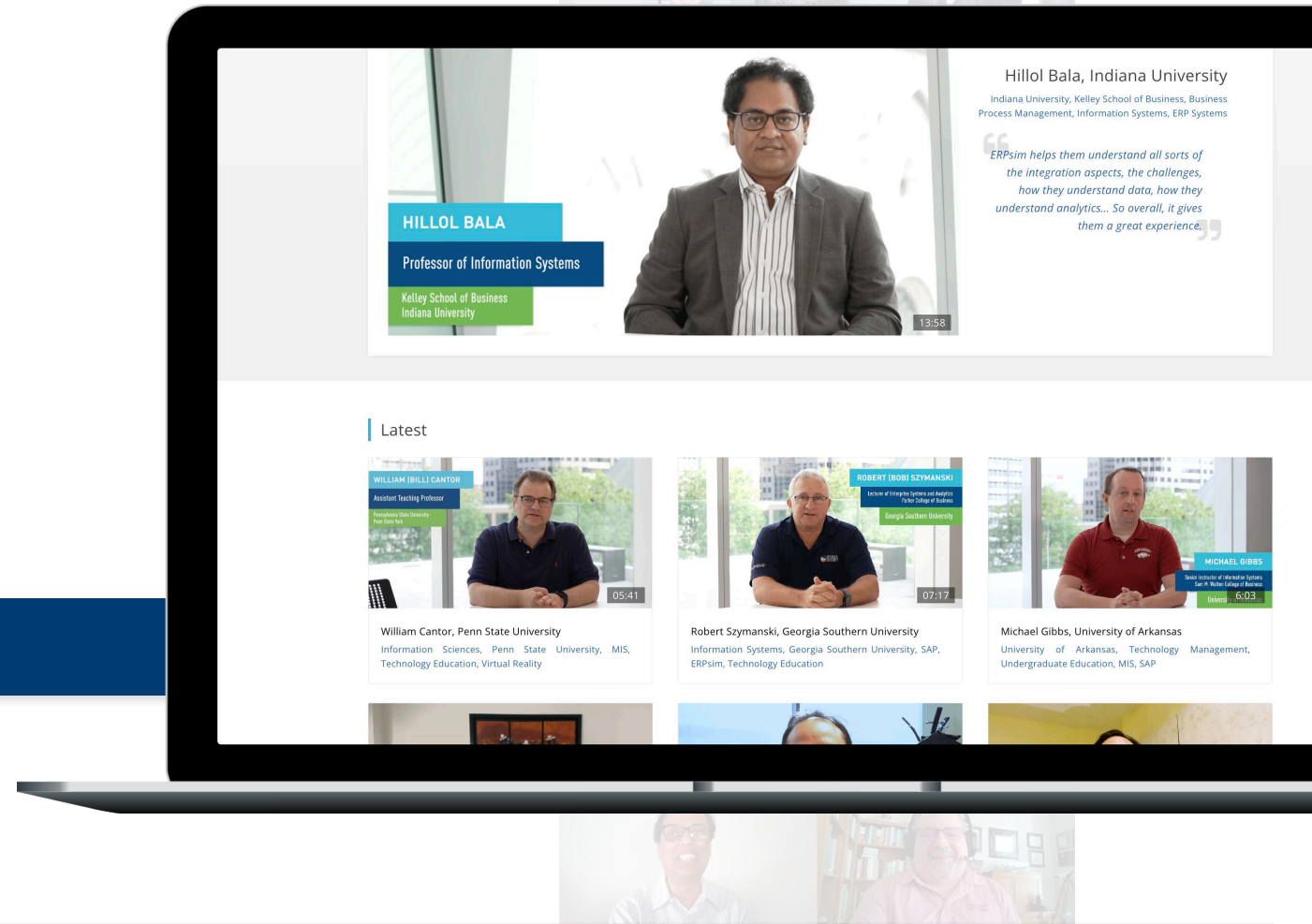
Hélène-Desmarais Building
HEC Montréal, Canada

[Register Now!](#)

Faculty Highlight Series Resumes

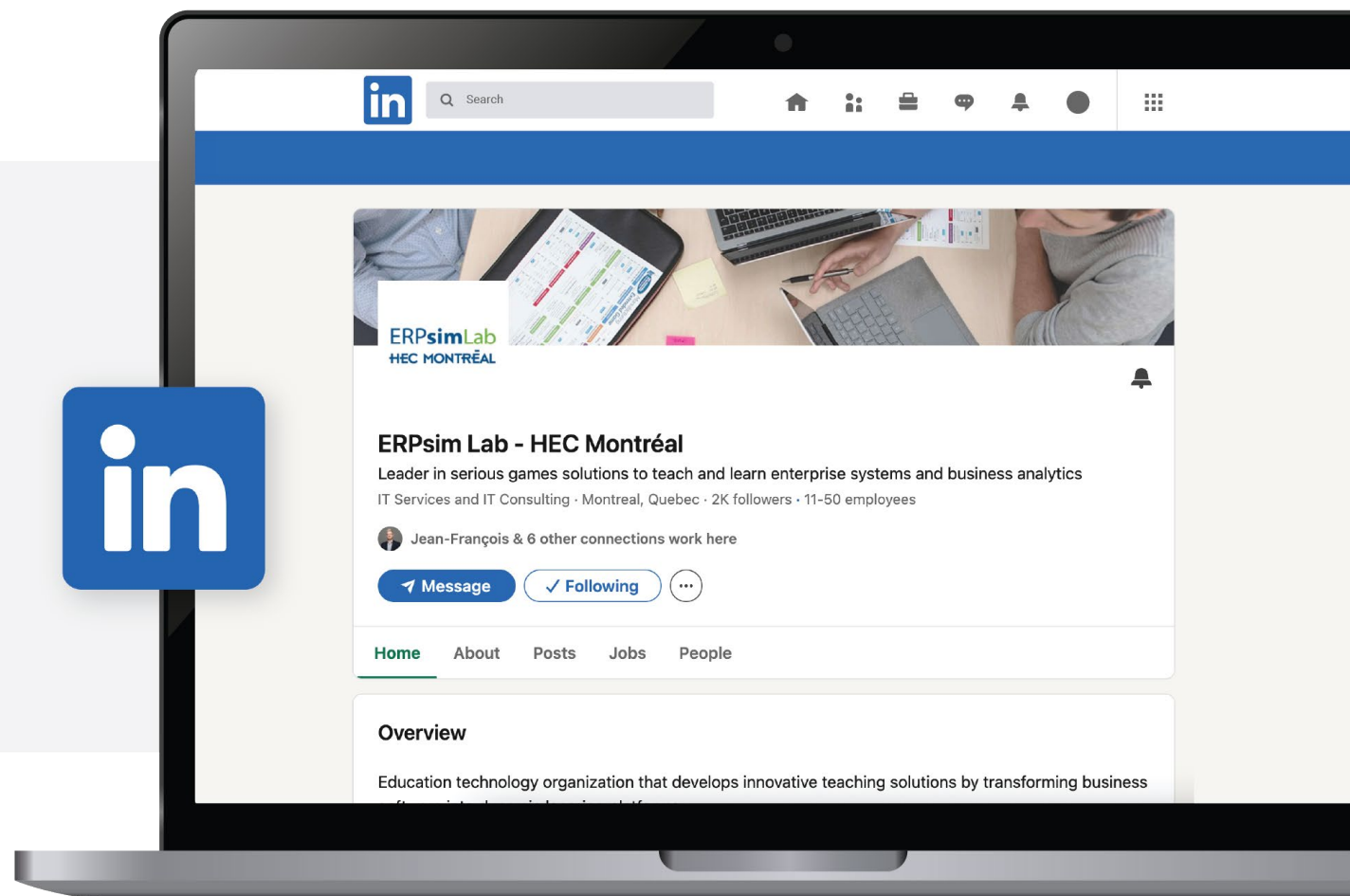
- A series of interviews showcasing the work of faculty members
- Learn more about their experience, teaching best practices, research projects, and tips and tricks using ERPsim

ersim.hec.ca/faculty-highlight-series



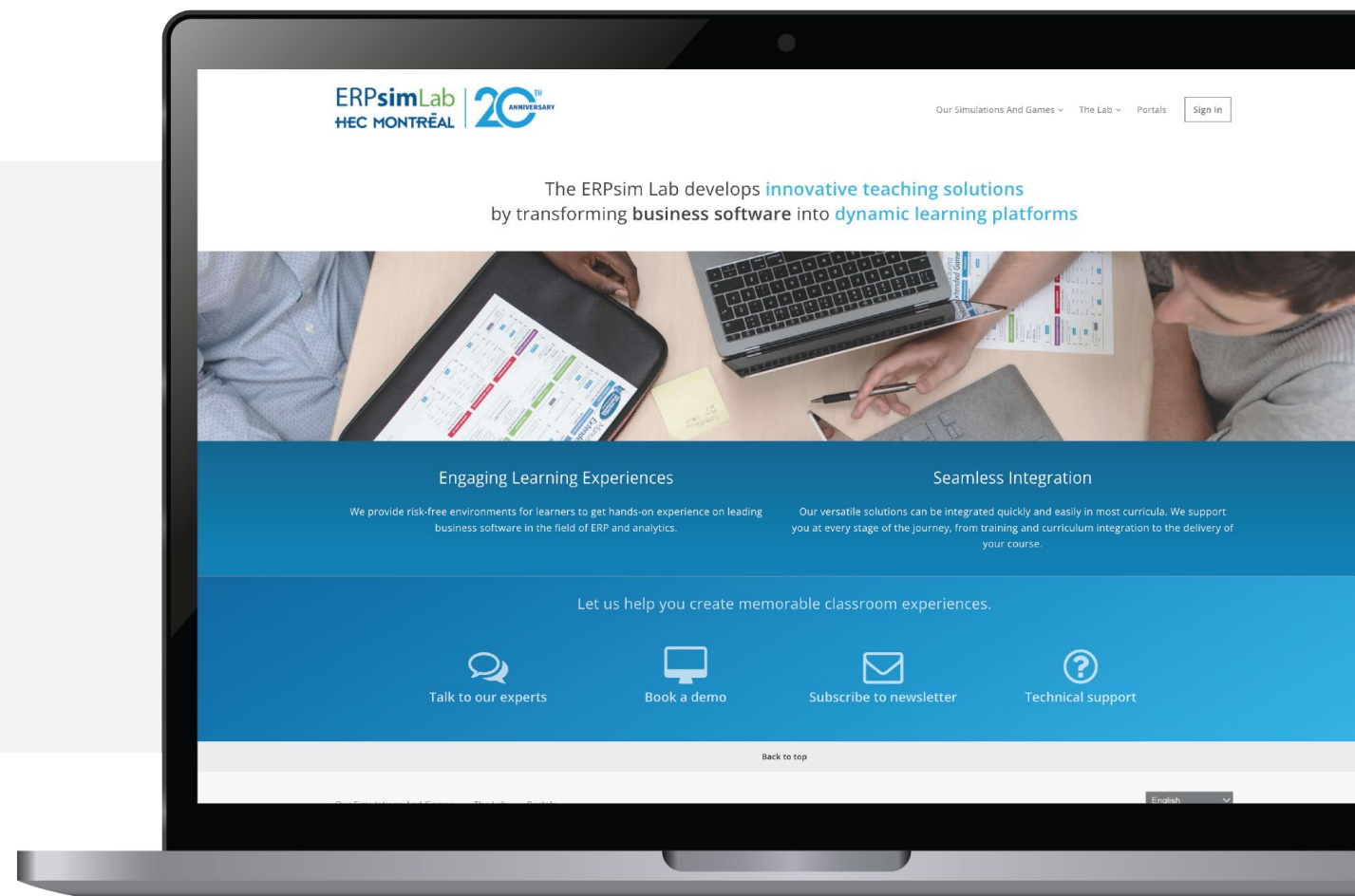


linkedin.com/company/erpsimlab





erpsim.hec.ca



Thank you!

Learn more about ERPsim:

 ersim.hec.ca

 ersim@hec.ca