

ERPsim

A New Era of ERPsim Competitions

Please Note

This webcast is being recorded and will be made available on the ERPsim website. Please be aware that questions you ask or discussions you participate in will be recorded as a part of the presentation.

By attending this online event you are giving your permission to being recorded. Participant names / photos / video (if connected to event via webcam) may be shared. If you do not wish to be recorded, please disconnect from the webcast at this time.

This presentation contain references to products of SAP SE, Dietmar-Hopp-Allee 16, 69190 Walldorf, Germany. The names of these products are registered and/or unregistered trademarks of SAP SE. SAP SE is neither the author nor the publisher of this presentation and is not responsible for its content.

Webinar
Online | January 21, 2025

ERPsimLab
HEC MONTRÉAL



Serious games to learn enterprise
systems and business analytics

Agenda

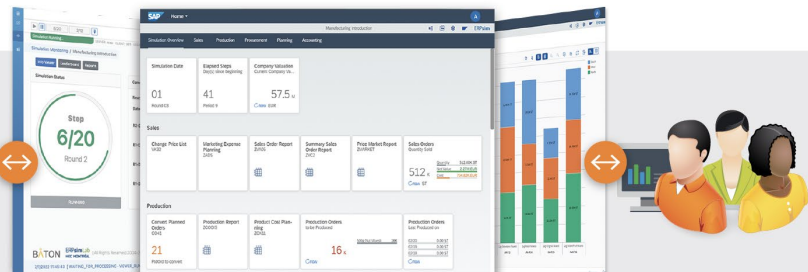
1. Overview
2. Rules of the 2025 edition
3. Prizes
4. Q&A

ERPsim Solutions

ERPsim

Maple Card Game

ERPsim
Simulator



MANUFACTURING

- INTRODUCTION
- EXTENDED
- ADVANCED
- SUSTAINABILITY



LOGISTICS

- INTRODUCTION
- EXTENDED
- PLATINUM
- SUSTAINABILITY



MAPLE

- INTRODUCTION



Business Builders

Gaming Platform

SAP Analytics Cloud



Business Builders

gives educators the opportunity to prepare future leaders for an increasingly complex and data-driven world.



Enhanced visualization and data storytelling skills



Scenarios driven by data, which replicate real-world business challenges



SAP and academic collaboration



Students gain the practical skills to succeed in future careers



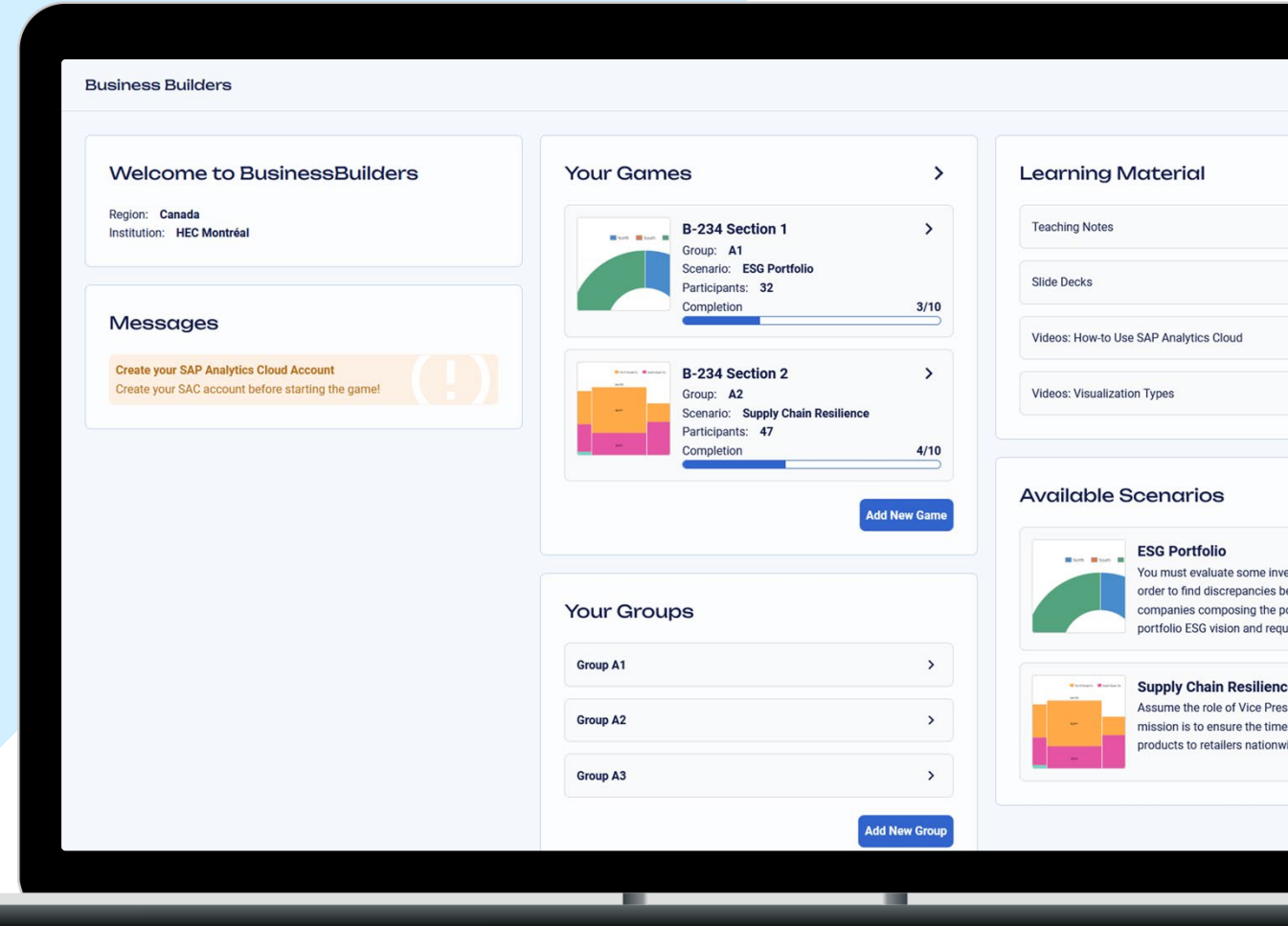
Competitive advantage in the job market



Free, cloud-based offering for educators and students around the world



HEC MONTRÉAL



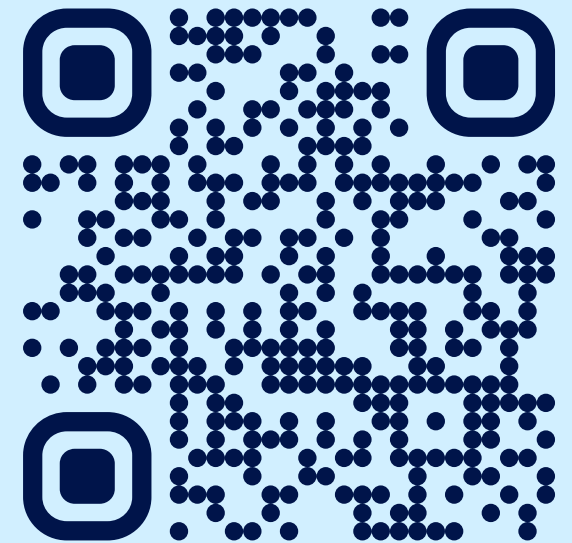
Business Builders

Get engaged and bring it to your classroom!

- ✓ Free of charge
- ✓ No membership needed
- ✓ No programming or experience required



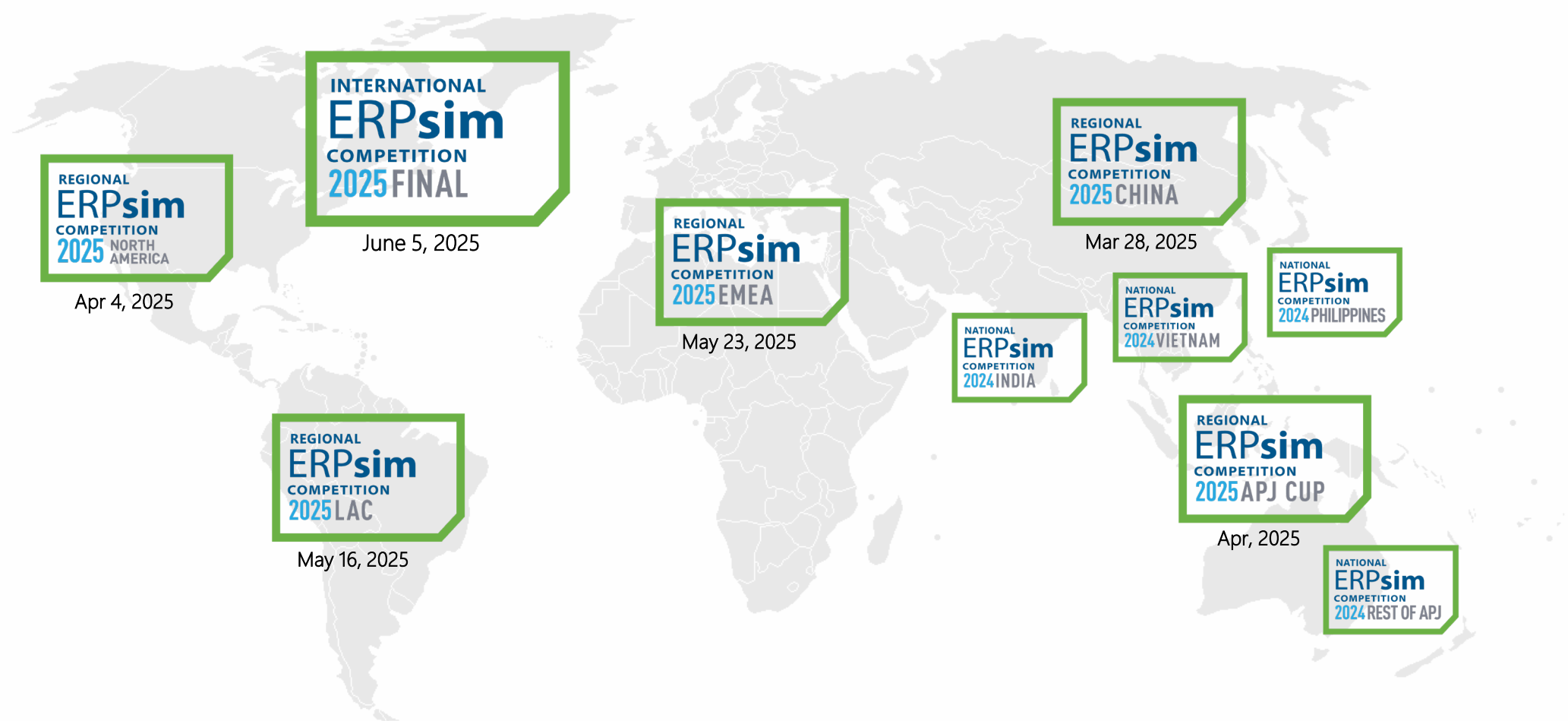
HEC MONTRÉAL



Scan the QR code
and start your game
today!

businessbuilders.games

ERPsim competitions 2025



Rules of the game

- Teams will play rounds of the ERPsim **Manufacturing Sustainability** scenario.
- Teams are **only allowed** to perform **transactions** described on the **Job Aid**.
- Teams must finish with a debt less than the initial one (8 Million EUR).
- Teams are not allowed to reverse the debit and credit in the financial transactions used to increase capacity or reduce setup time. Spending in capacity increase and setup time reduction is irreversible.
- Coaches can join their team's breakout rooms, but they will be asked to come back to the main room when the simulation is running. Coaches can login, but they are not allowed to input transactions.
- Teams have access to the OData service.
- Teams must always behave ethically and responsibly.
- Teams will be ranked based on their company valuation.

New rules for 2025

- To be eligible for participation in any of the competitions (national, regional, and international), participating universities are required to integrate both the **ERPsim game and Business Builders** into their teaching curriculum.
- Historical data relevant to the competition will be provided as the game starts. Universities that **engage with at least 100 students** in a Business Builders activity (in winter and spring 2025) on their campus will gain access to the data prior to the competition.
- Universities that are not currently clients of ERPsim in their curriculum can still be eligible to participate in the competition should they **engage with 500 students** with Business Builders.

Random Disruptions

Event	Name	Context	Scope
1	Cold Spell	The cold spell increases the carbon emission per unit of raw material purchased , as suppliers must use energy-intensive protection measures to protect the fruits/nuts/cereals from the cold. However, your company requires less energy to stock them in a cool environment.	All suppliers, 2 random raw materials
2	Heat Wave	The heat wave increases the carbon per unit of raw material purchased , as suppliers must use energy to protect the fruits and/or nuts from the intense heat before the harvest. Furthermore, your company requires more energy to stock them in a cool environment.	All suppliers, 2 random raw materials
3	Supply Chain Disruptions	Disruptions in your supplier's supply chain required them to use less-optimal sourcing and routing. Therefore, all products purchased from this supplier will be generating more carbon emissions .	Random suppliers, All products
4	New Legislation	New legislations in Germany increases drastically the carbon tax while reducing the carbon footprint of purchasing energy as more energy is now generated by renewable sources.	-
5	Waste Heat Recovery	Newly installed waste heat recovery system on your machineries allow your company to reuse heat from your production process, thus reducing the amount of energy purchased . However, the more complex machineries require more care when cleaning up between production batches.	-
6	Main Warehouse Relocation	A recent relocation of your main warehouse increases the distance between your main hub and two regions and Germany while reducing the distance with the third region . The distance difference will be impacting the carbon emissions generated by deliveries from the main warehouse to the regions and by sales delivered directly from the main warehouse.	Random regions

Digital Badges Awards



FEB
7



ERPsim Sustainability Challenge 2025

Online event

Friday, February 7, 2025 at 10:00 AM EST

APR
4



ERPsim North America Competition 2025

Online event

Friday, April 4, 2025 at 12:00 PM EDT

MAY
16



ERPsim LAC Competition 2025

Online event

Friday, May 16, 2025 at 12:00 PM EDT

MAY
23



ERPsim EMEA Competition 2025

Online event

Friday, May 23, 2025 at 9:00 AM EDT

Questions

Thank You!

Website: erpsim.hec.ca

Email: erpsim@hec.ca