

ERPsim

10th ERPsim User Group Meeting

Please Note

This webcast is being recorded and will be made available on the ERPsim website. Please be aware that questions you ask or discussions you participate in will be recorded as a part of the presentation.

By attending this online event you are giving your permission to being recorded. Participant names / photos / video (if connected to event via webcam) may be shared. If you do not wish to be recorded, please disconnect from the webcast at this time.

This presentation contain references to products of SAP SE, Dietmar-Hopp-Allee 16, 69190 Walldorf, Germany. The names of these products are registered and/or unregistered trademarks of SAP SE. SAP SE is neither the author nor the publisher of this presentation and is not responsible for its content.

10th ERPsim User Group Meeting
Online | June 7, 2021

ERPsimLab
HEC MONTRÉAL

Serious games to learn enterprise
systems and business analytics

Pierre-Majorique Léger, Ph.D.

HEC MONTRÉAL



NSERC-Prompt
Industrial Research Chair
in User Experience

Director ERPsim Lab
Co-director Tech3Lab

pml@hec.ca

ResearchGate
SCIENTIFIC NETWORK

https://www.researchgate.net/profile/Pierre-Majorique_Leger

GRADUATE STUDIES



POST-DOCTORATE

HEC MONTRÉAL



LABORATORIES



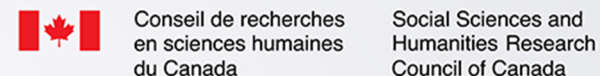
ERPsimLab
HEC MONTRÉAL



GUEST PROFESSOR



FINANCIAL SUPPORT



Canada



HEC MONTRÉAL

The ERPsim Team



Pierre-Majorique Léger, Ph.D.
Director, Principal Inventor



Gilbert Babin, Ph.D.
Co-Inventor



Jacques Robert, Ph.D.
Co-Inventor



Jean-François Michon, M.Sc.
Administrative / R&D Director



Felix G. Lafontaine, M.Sc.
Senior Business Analyst



Forough Karimi-Alaghehband, Ph.D.
Pedagogical Development Manager



Karl-David Boutin, M.Sc.
IT Project Manager



Sergio De La Cruz, M.Sc., MBA
Business Development Manager

Undergraduate and Graduate students in support and development roles:

- **Burak Öz**
- **Catherine Ip-Can**
- **David Aguirre-Monroy**
- **Joel Chrispin**
- **Mariko Dupuis**
- **Pierre-Olivier Brière**
- **Rosetta Chang**

Game-based Learning for ERP

ACADEMIC

16+ years in use
2 000+ faculty trained

In 2020, more than
6 000+ simulations
were played by
45 000+ students
across
280+ universities
from around the world

COMMERCIAL

Many large organizations, such as Boeing, Coca-Cola, 3M, Kraft, Caterpillar, Pfizer and SAP, are using ERPsim to train their end-users on ERP systems.

BATON

RESEARCH

Several researchers have started using ERPsim to run experimental protocol in IS.
Visit
<http://erpsim.hec.ca/research>

WINNER OF THE

2013 Prix de l'innovation pédagogique Cidegef/FNEGE
2007 Majdi Najm Award
2006 HEC Montréal Award for teaching excellence for an assistant professor
2005 HEC Montréal Award for the use of technology in teaching

Keynote Speakers



Dr. Karina Montilla Edmonds

VP, Global Lead for Academies
and University Alliances, SAP SE



Dr. Katharina Schäfer

Global Head of University Alliances, SAP SE

What is ERPsim?

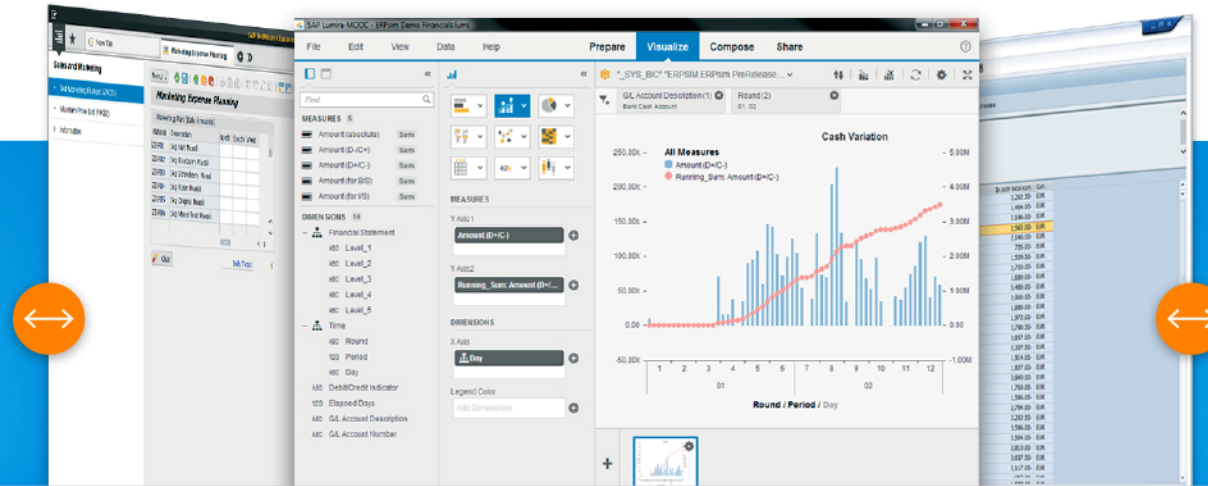


*ERPsim is like a
flight simulator experience
where you fly in a **virtual sky**,
but you pilot a **real** plane!*



What ERPsim Does

ERPsim



Simulator

- 1 Automation of administrative tasks
- 2 Simulation of a market
- 3 Simulation of the passing of time

ERP System



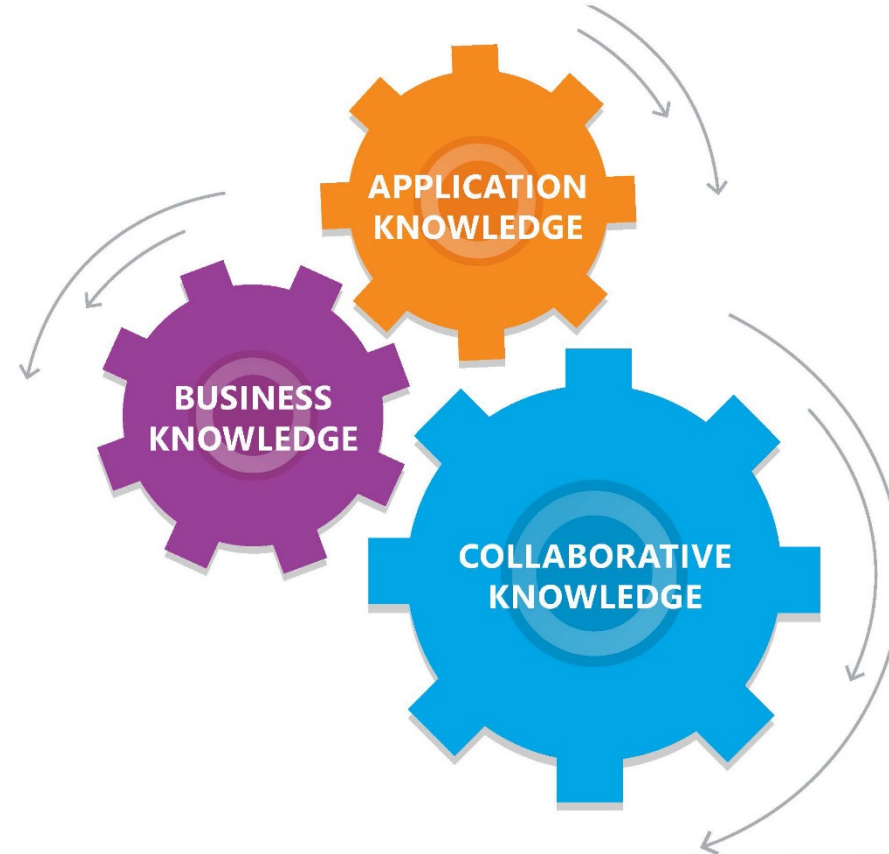
Participants

- 1 Business decisions
- 2 Business analytics

Moving Toward an IT Competency Approach

From a standard approach...

... to a competency approach



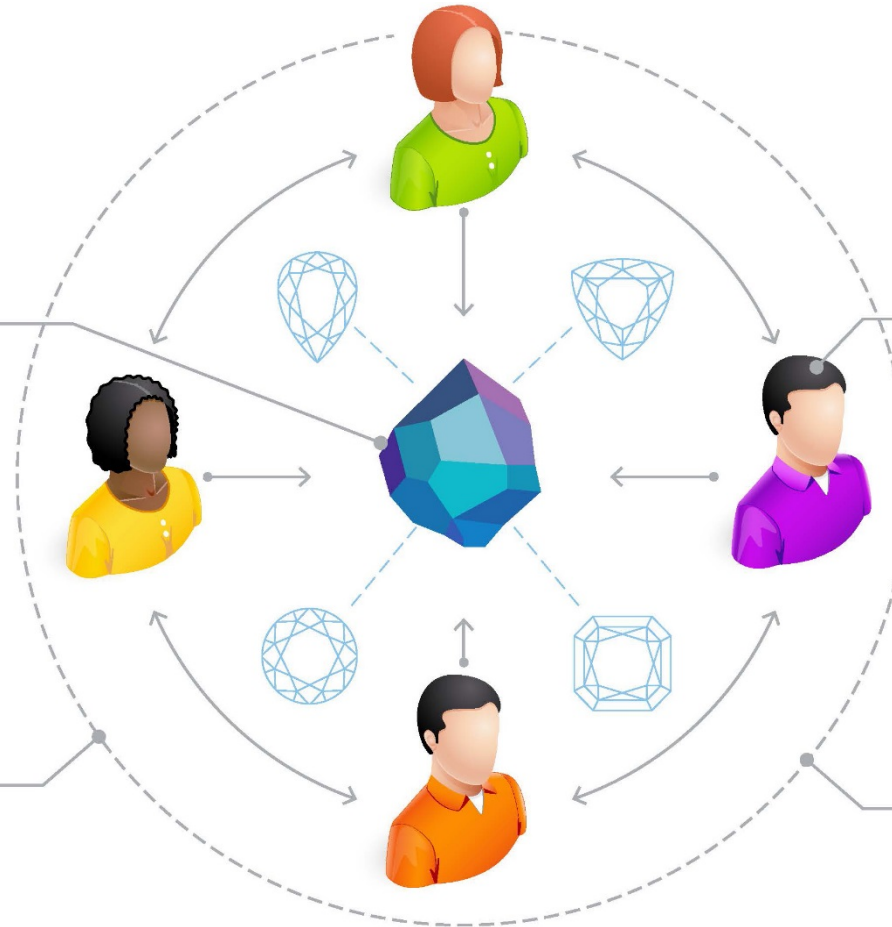
Active Learning of ERP Related Concepts

Problem Based Learning Approach

AUTHENTICITY
Realistic situations



TEACHER
acts as facilitator
or tutor



**STUDENT CENTERED
APPROACH**

**SMALL GROUP
SETTING**

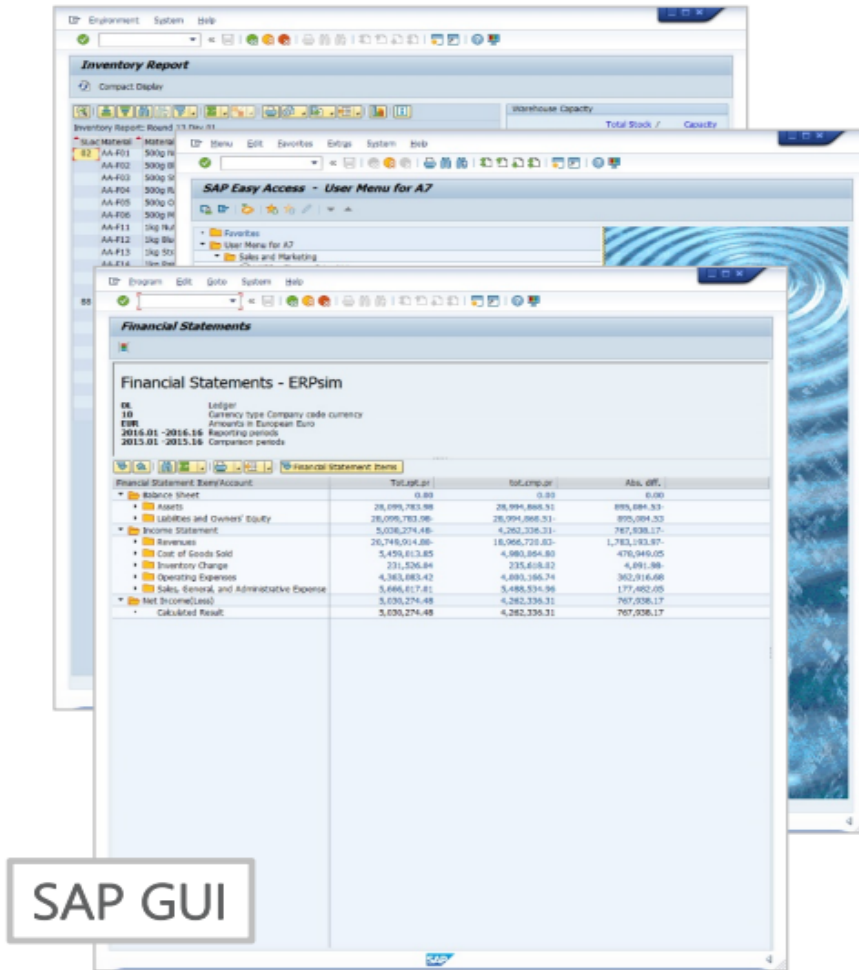
Using ERPsim, students learn

- How to manage a company in a competitive environment
- How to use IT and ERP system to increase their company's performance
- How does SAP and/or ERP systems work
- How to perform and excel in a team
- How to use analytics to stay ahead of competition
- How various third-party business-intelligence software works

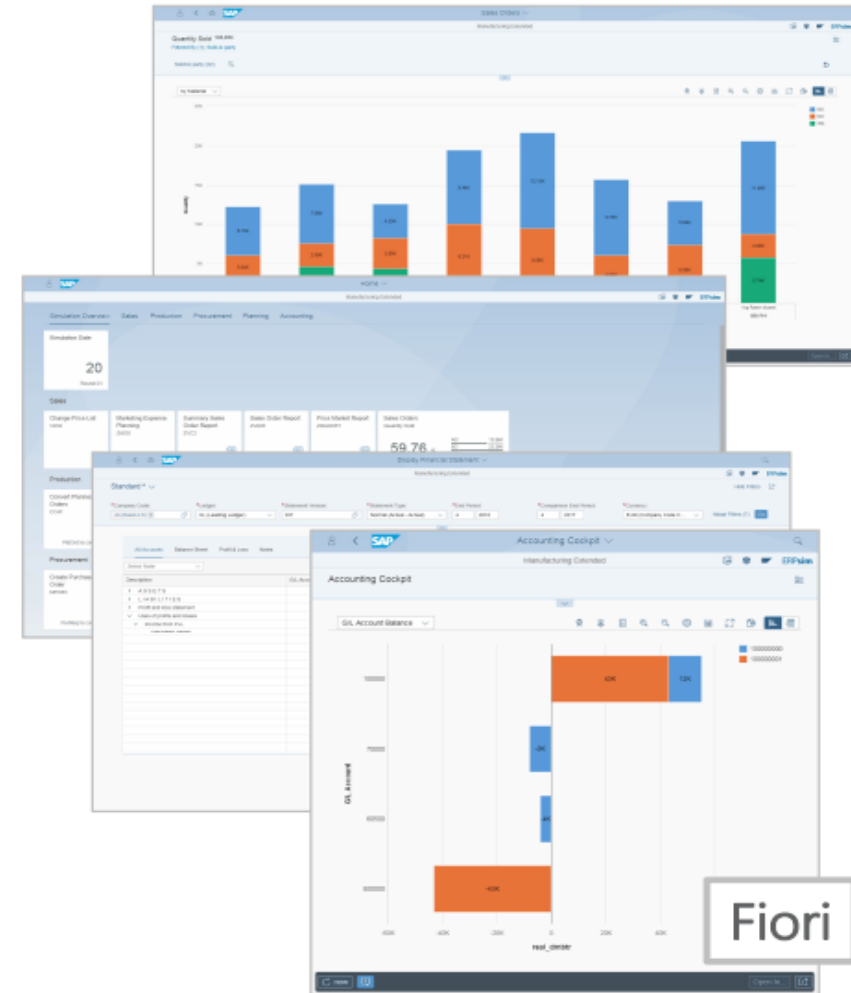
Using ERPsim, you get

- Increased motivation amongst students to learn concepts at play (ERP, business management, and more!)
- Better engagement in the form of participation and discussions
- Higher satisfaction and changed attitude towards the topic
- Better feedback from students

Game Environment

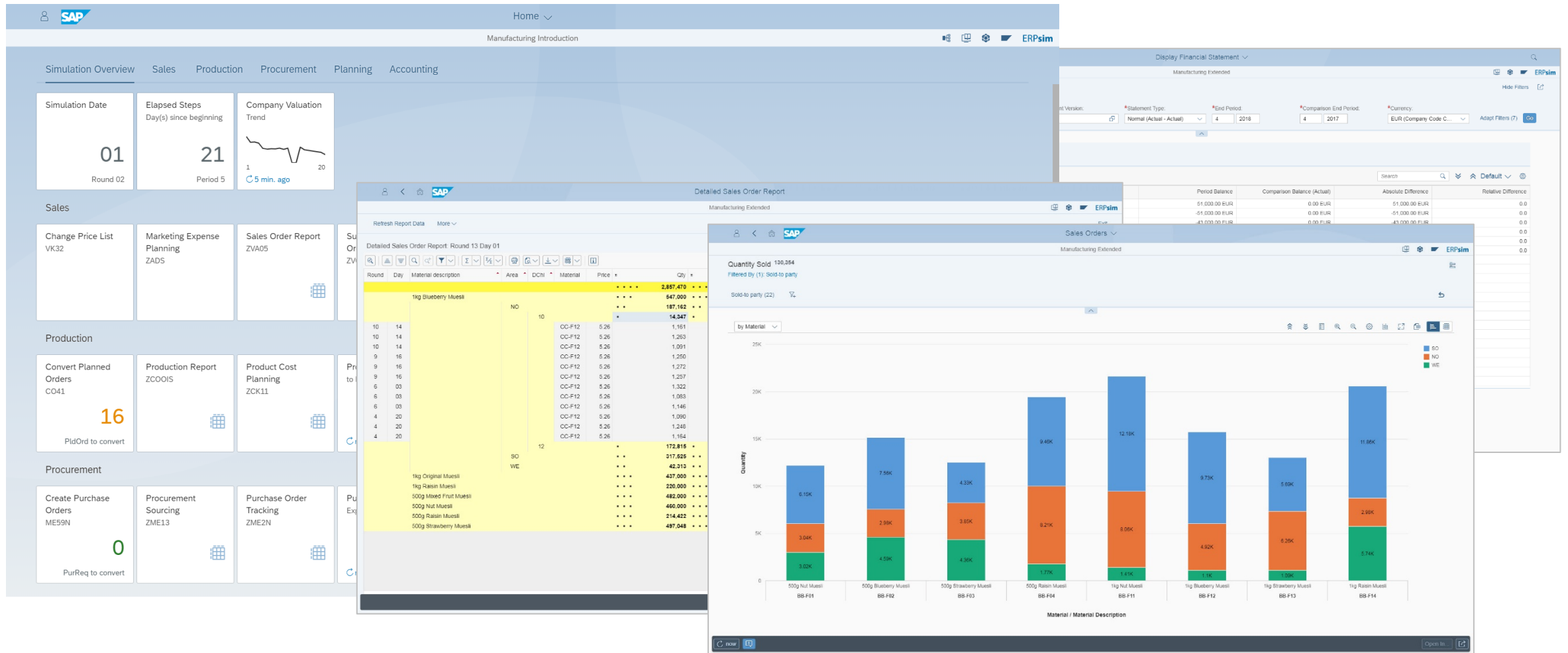


SAP GUI

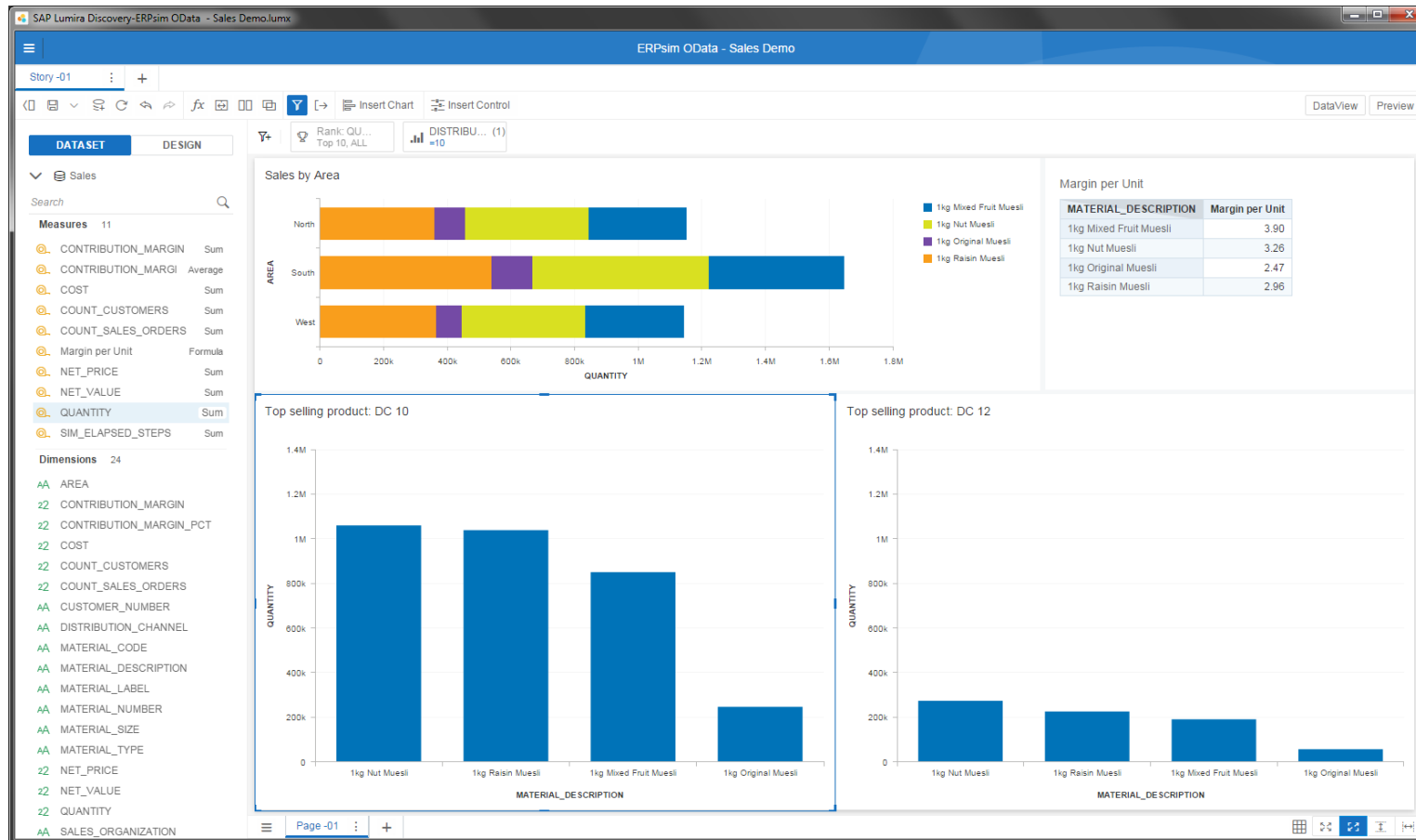


Fiori

ERPsim for S/4HANA 1809



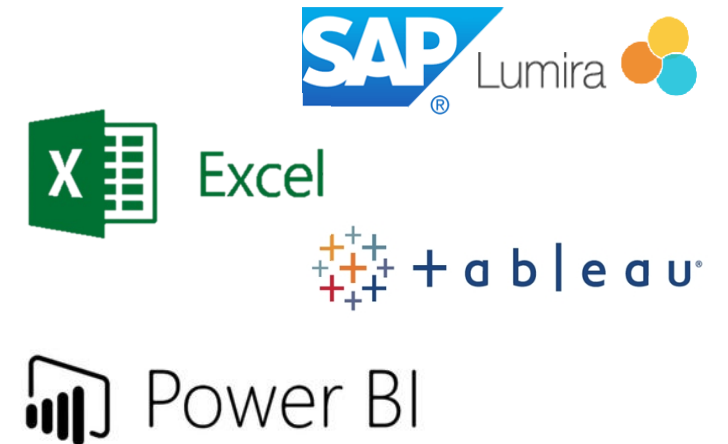
Support for self-service BI tools



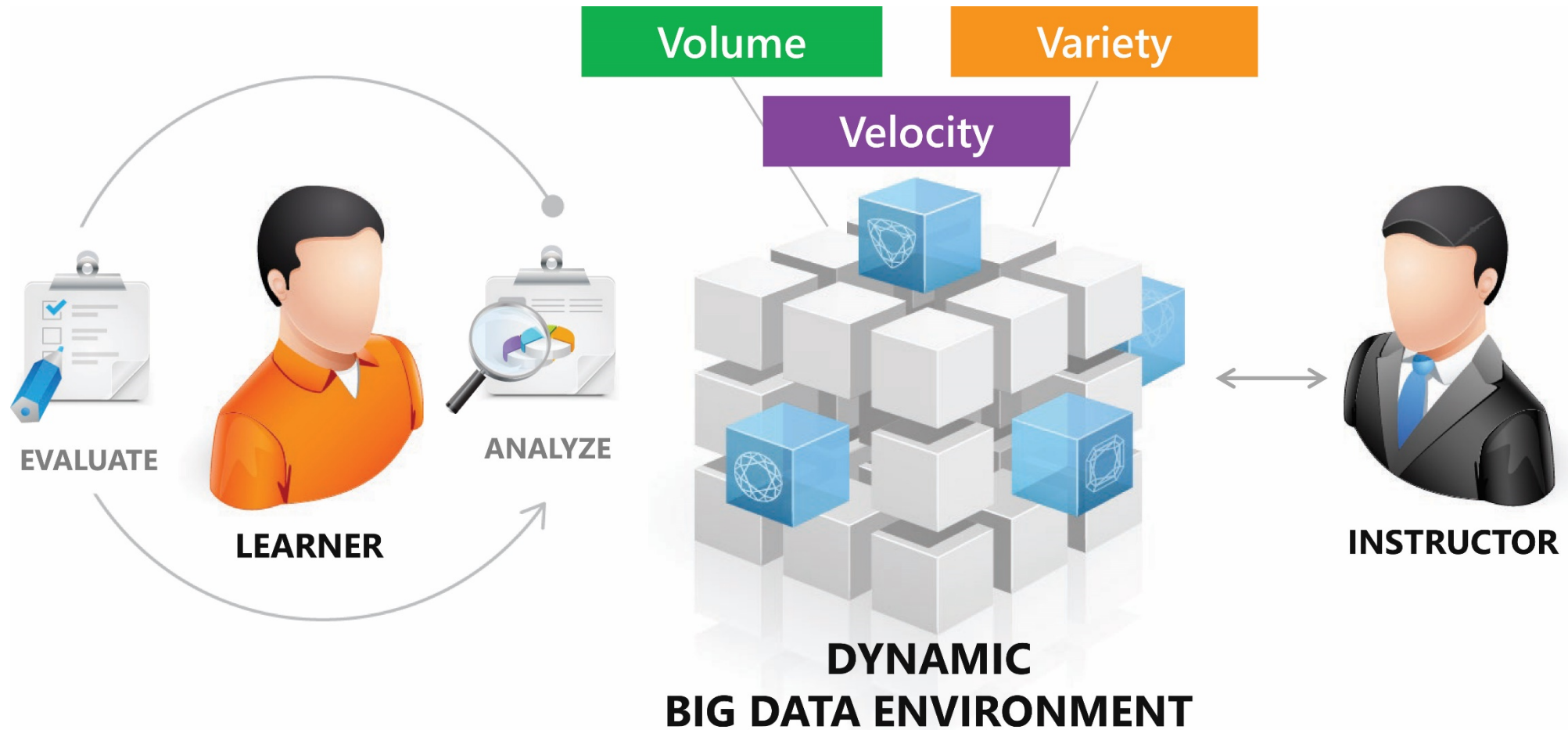
Dynamic Environment
Relevant Data

OData Compatible with BI tools

SAP® Analytics Cloud



Analytics in a Dynamic Environment



A Complete Solution

Simulator

Four distinct scenarios, with a focus on operational excellence and business intelligence, that allow for use at all university levels.

Instructional Assets

Ensures that students have a quick start and minimizes the preparation time required by the professor.

Support

We accompany you by providing technical and pedagogical support for a seamless journey!

Where to use ERPsim?

Target Audience

- Graduate program: EMBA, MBA, MSc, MAIS, MIS
- Undergraduate programs: BBA, BSCM, BID, BAcc, BCom
- Entrepreneurship programs
- Students preparing for TS410 Certification

Courses

- Management Information Systems
- Supply Chain Management
- Accounting and Finance
- ERP Integration and Configuration
- Business Analytics
- Entrepreneurship Management

Multiple Scenarios Available



MANUFACTURING

INTRODUCTION ADVANCED
EXTENDED



LOGISTICS

INTRODUCTION PLATINUM
EXTENDED



RETAIL

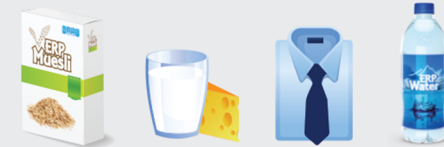
INTRODUCTION EXTENDED



DISTRIBUTION

STANDARD

Game Features



Real-time business decisions	✓	✓	✓	✓
Adaptable difficulty scenarios	✓	✓	✓	
Operational excellence	✓	✓		✓
Business analytics and data visualisation	✓	✓	✓	
SAP Fiori UI	✓	✓	✓	✓
ERP configuration & master data	✓			

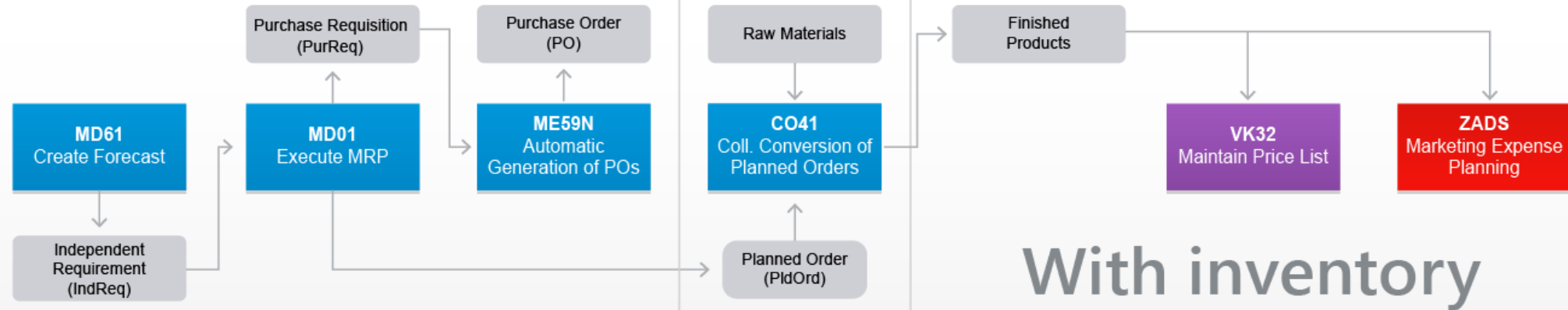
Manufacturing Introduction and Extended



HEC MONTRÉAL
ERP SIMULATION GAME
Manufacturing Game

powered by ERPsim

Manufacturing Introduction



Planning, Purchasing, Production, and Sales and Distribution

ROUND 3

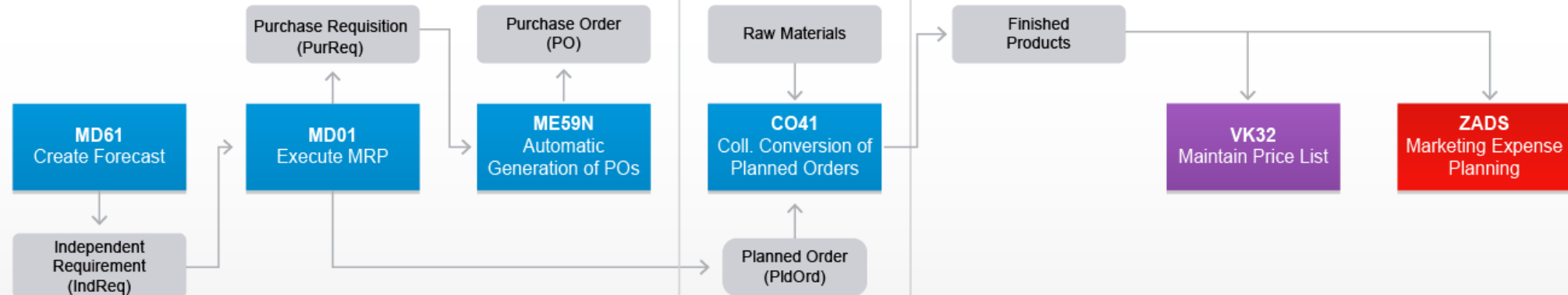
Production, Sales and Distribution

ROUND 2

Sales and Distribution Only

ROUND 1

Manufacturing Extended



Manufacturing Game Job-Aid



Manufacturing Introduction Game

User: \$1 to \$9
Initial password: ERPSIM

Adapted for Fiori and for SAP GUI
with Fiori Visual Theme Activated

© ERPSim Lab, HEC Montréal
Last Update: May 11, 2020



HEC MONTRÉAL
ERP SIMULATION GAME
Manufacturing Game

powered by ERPSim



Nut	
\$\$-F01	500g
\$\$-F11	1kg
Starting Inventory	30 000 units each
35% wheat	
35% oat	
30% nut	
1 box / 1 bag	



Blueberry	
\$\$-F02	500g
\$\$-F12	1kg
Starting Inventory	30 000 units each
35% wheat	
35% oat	
30% blueberry	
1 box / 1 bag	



Strawberry	
\$\$-F03	500g
\$\$-F13	1kg
Starting Inventory	30 000 units each
35% wheat	
35% oat	
30% strawberry	
1 box / 1 bag	



Raisin	
\$\$-F04	500g
\$\$-F14	1kg
Starting Inventory	30 000 units each
35% wheat	
35% oat	
30% raisins	
1 box / 1 bag	

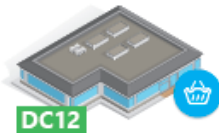


Original	
\$\$-F05	500g
\$\$-F15	1kg
Starting Inventory	None
50% wheat	
50% oat	
1 box / 1 bag	



Mixed	
\$\$-F06	500g
\$\$-F16	1kg
Starting Inventory	None
30% wheat	
30% oat	
40% fruits & nuts	
1 box / 1 bag	

CUSTOMERS



DC 12: Grocery Chains
Payment Time: 10-20 days

Approximate Market Size
€220 000 per team per week

SUPPLIERS

Lead time (days)	1-5
Payment time (days)	20

PRODUCTION CONSTRAINTS

Capacity (units/day)	16 000
Setup time (hours)	8

STORAGE CAPACITY AND COSTS

Product type	Current space	Cost per additional 50 000 units*
Finished products	250 000 boxes	€500/day
Raw materials	250 000 kg	€1 000/day
Packaging (bags and boxes)	750 000 units	€100/day

FIXED COSTS (€ paid each 5 days)*

Direct labor	10 000
Manufacturing overhead	7 500
S, G & A	20 000
Depreciation (Building)	1 250
Depreciation (Equipment)	33 333

*Billed automatically



Instructional Assets and Support



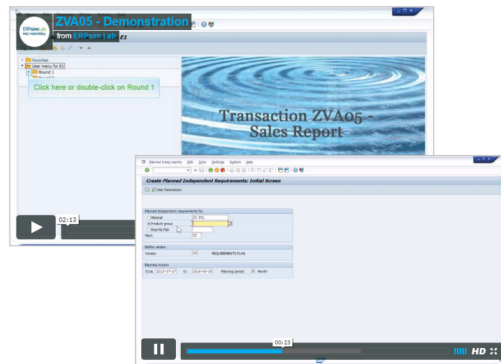
Job Aids



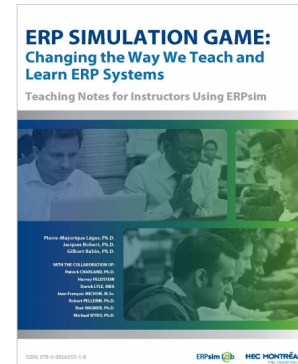
Slide Decks



Participant's Guide



Instructional Videos



Material for Instructors



Technical and Pedagogical Support

Course and Curricula Example

Goals 1 & 2 Enterprise Systems, & Business Processes	1. Introduction to IT in organizations	Improving business processes with IT
	2. IT and business processes – ERPsim (1)	
	3. IT-based business process innovation (part I)	
	4. IT-based business process innovation (part II)	
	5. IT enabling enterprise integration – ERPsim (2)	
	6. IT acquisition (the “development” approach)	Acquisition of IT solutions
	7. IT acquisition (the “buy” approach)	
Goal 3 Analytics	8. Intro to business analytics – dashboard development	Improving decision making with IT
	9. Analysis of transactional data (basic)	
	10. Analysis of transactional data (advanced)	
	11. Business Analytics - test dashboard - ERPsim (3)	
Goals 1, 2, & 3	12. Integration - Final Game using the dashboard – ERPsim (4)	Integration

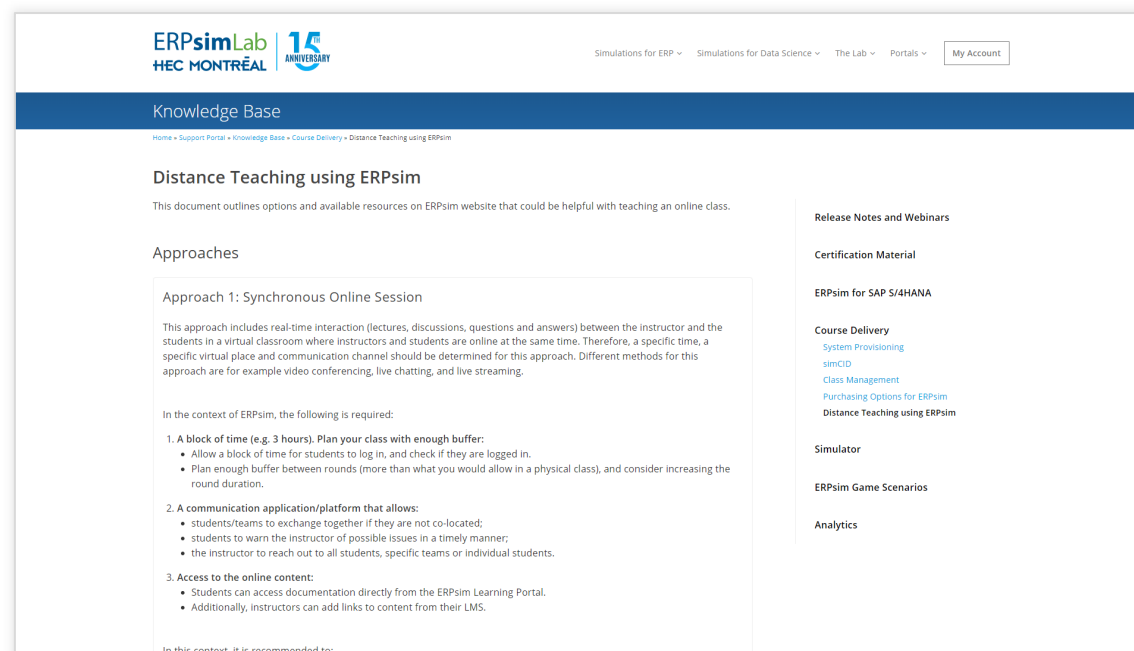
Distance Teaching

A collection of tips and tricks on how to run ERPsim in a distance teaching context:

- Synchronous and Asynchronous approaches
- Efficient communications with participants
- Technical considerations
- A list of available resources

Teaching notes, resources, tips and trips

<https://ersim.hec.ca/en/node/606>



Pricing and Support

ERPsim License

\$55 CAD per student,
valid for one course
(max. 6 months)

Effective price from August 1st 2021 to August 1st 2022.

May change at anytime.

Visit <https://ersim.hec.ca/buy> for conditions.

In the event of a disparity between the price presented on this slide and the one on <https://ersim.hec.ca/buy>, the latter shall prevail.

The license includes

- For the student:
 - i. Access to the simulation game
 - ii. Access to the pedagogical material (job aids, participant's guide, slides, self-training videos, etc.)
- For the professor:
 - i. Ability to start and manage any of the game scenarios, unlimited for the duration of the course.
 - ii. Access to technical and pedagogical support from HEC Montréal.



Become a Certified ERPsim User

For New ERPsim Users

This certification provides you all the necessary knowledge to run an ERPsim simulation game in a classroom setting, and is required to be able to use any of the simulation games provided by the Lab.

Learn more at
ersim.hec.ca/certification

Online Course

Complete the
Online Course
in self-study mode



Session with our team

Register for a
one-on-one session with our
team. We'll answer all your
questions!



Receive your simCID
and start using ERPsim
immediately!

Advanced ERPsim and Certified Trainer

For Experienced Users **Available July 2021**

For experienced users who are interested in becoming ERPsim trainers and certify other faculty members

Learn more at
ersim.hec.ca/certification

Online Course: Advanced topics

Complete the
Online Course
in self-study mode



For TTT: Write a short exam

This is a short essay where you
explain your plan and
objectives for training other
faculty!



You will be able to train other
faculty and certify them as
Level 1 instructors

Experience ERPsim!

- Demo and hands-on experience:
 - Tuesday Morning
 - Tuesday Afternoon
- Join via the same Zoom link that you have received



MANUFACTURING



LOGISTICS

Features

SAP System

UI

Analytics

Learn more about the
2021 edition on Wed
June 9th

SAP S/4HANA 2020

SAP Fiori

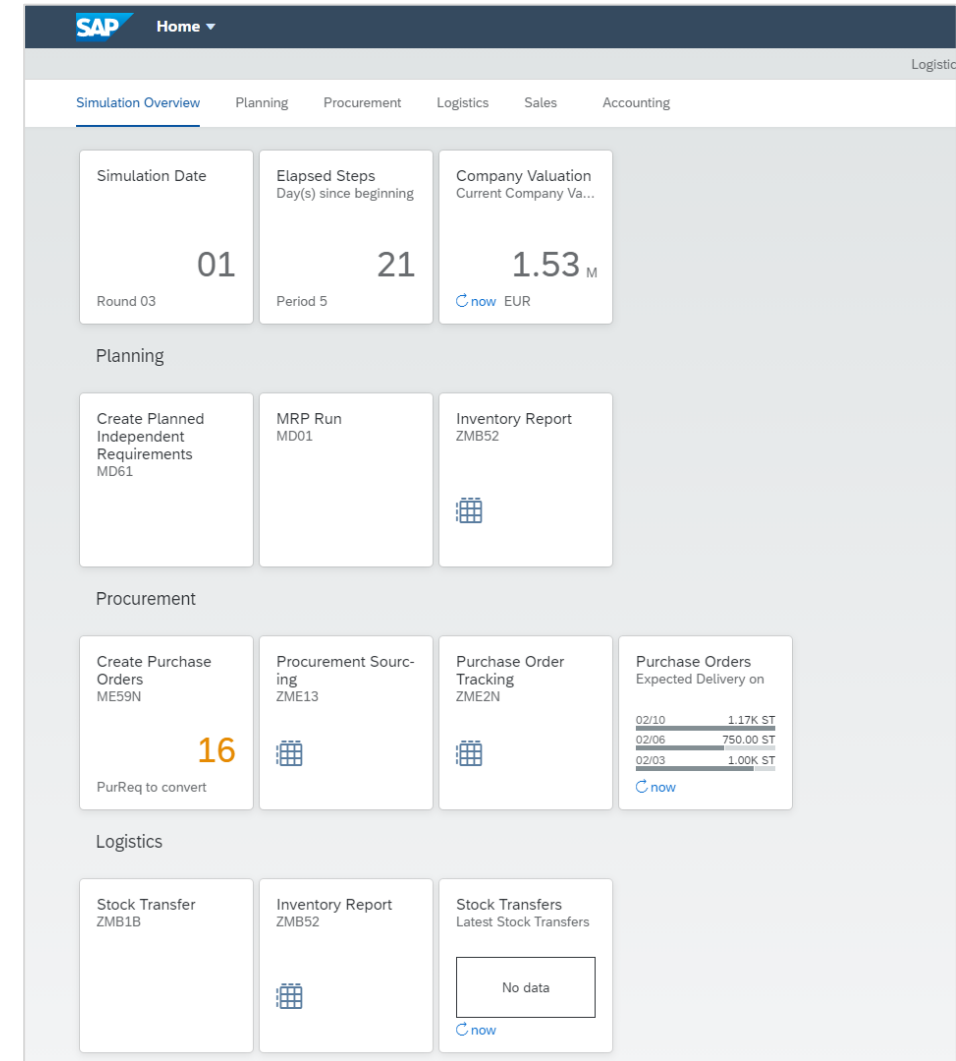
SAP GUI

SAP GUI reports

Smart Business*

OData Service 2.0*

* Logistics, Manufacturing and Retail games only



SAP Fiori Launchpad configured for the
Logistics Extended game

Thank you!

erpsim.hec.ca erpsim@hec.ca