

ERPsim

Manufacturing Sustainability R5-6 Student Friendly Challenge - FINAL

Please Note

This event might be recorded and made available on the ERPsim website. Please be aware that questions you ask or discussions you participate in will be recorded as a part of the presentation.

By attending this online event you are giving your permission to being recorded. Participant names / photos / video (if connected to event via webcam) may be shared. If you do not wish to be recorded, please disconnect from the event at this time.

This presentation contain references to products of SAP SE, Dietmar-Hopp-Allee 16, 69190 Walldorf, Germany. The names of these products are registered and/or unregistered trademarks of SAP SE. SAP SE is neither the author nor the publisher of this presentation and is not responsible for its content.

ERPsim Manufacturing Sustainability Student Challenge 2025
Hybrid | Feb 28, 2025

ERPsimLab
HEC MONTRÉAL

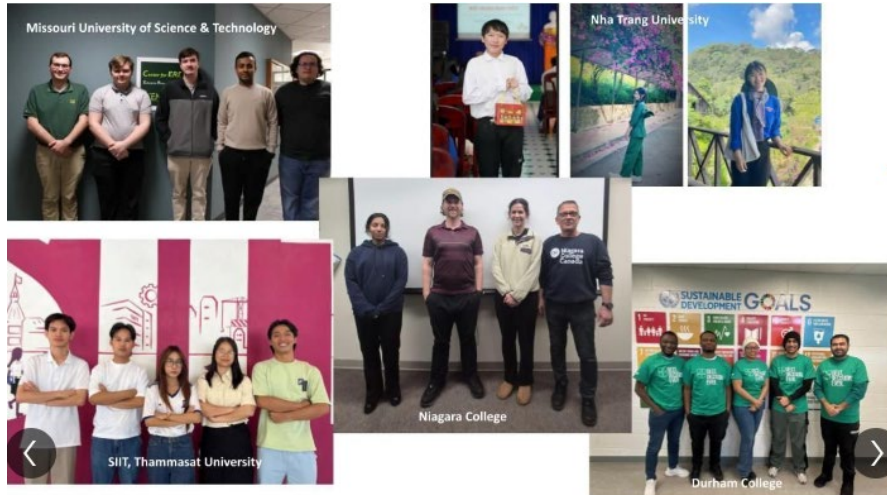


Serious games to learn enterprise
systems and business analytics

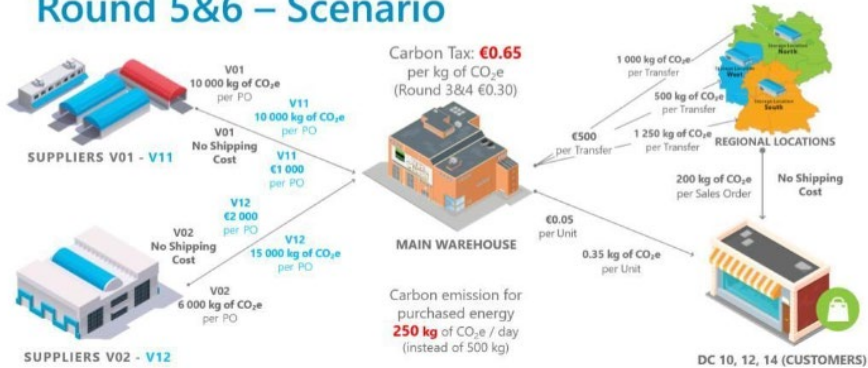
Teams

- A - Centria UAS
- B - Tecnológico de Monterrey
- C - Missouri University of Science & Technology
- D - Université Laval
- E - Durham College
- F - Oulu Business School
- G - UEH-ISB
- H - SIIT, Thammasat University
- I - Nha Trang university
- J - Montana Technological University
- K - Seneca Polytechnic
- L - Leeds Beckett University
- M - Azerbaijan Technical University
- N - Duy Tan University
- O - West Chester University
- P - Universidad Peruana de Ciencias Aplicadas
- Q - International Management Institute, New Delhi
- R - Niagara College
- S - Universidade Presbiteriana Mackenzie
- T - Central Michigan University
- U - Georgia College & State University
- V - International University of Rabat

LinkedIn



Round 5&6 – Scenario



ERPsIm Lab - HEC Montréal
1,752 followers
15h • 🌐

🚩 FINAL week of the ERPsIm Sustainability Challenge! ❤️

🧐 This week's ERPsIm Sustainability Challenge mirrors the real-world pressures businesses face. Germany's increased carbon tax and renewable energy push are forcing our students to think critically about their operational impact. 🌍

How to adjust strategies to maintain profitability and thrive in this evolving landscape? 🤔

🏆 Join us this Friday for the thrilling conclusion of the challenge!

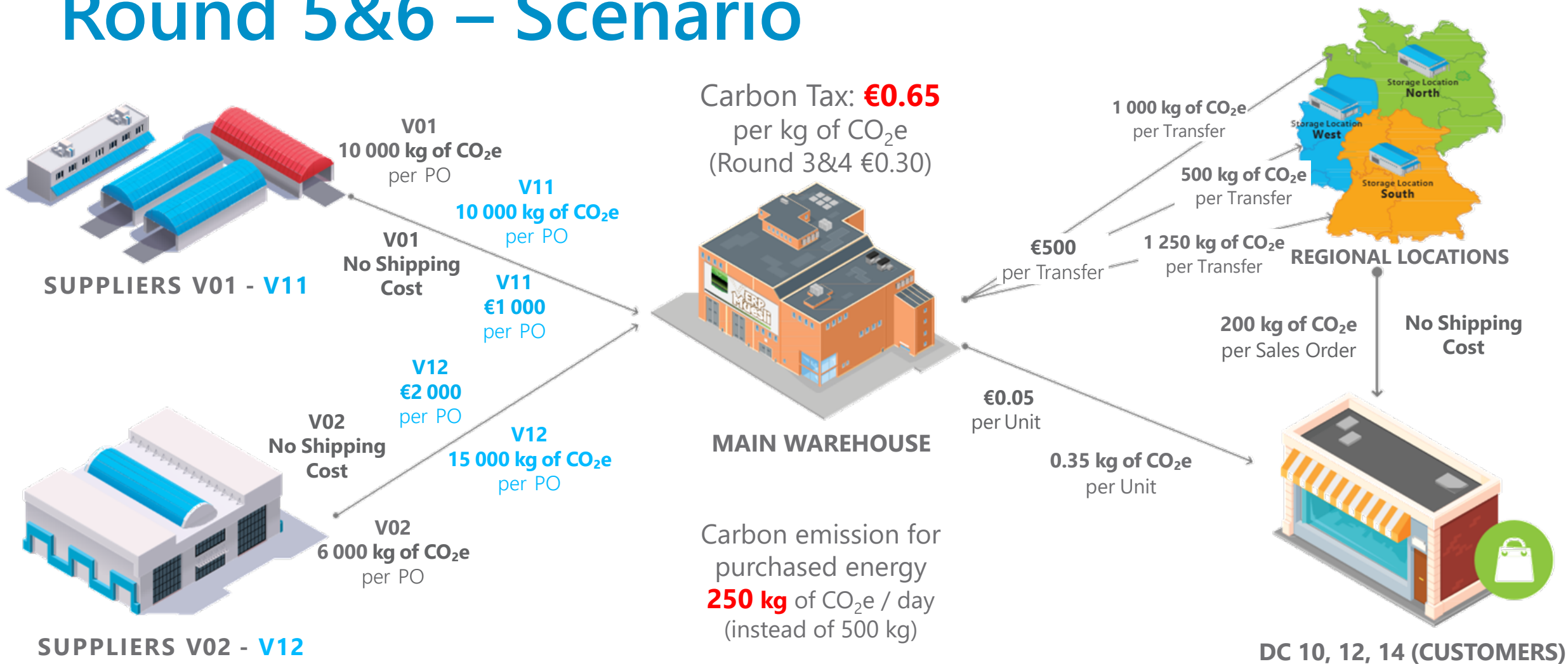
Results are being published here: <https://lnkd.in/ersE8sqU>

#ERPsIm #Sustainability #SupplyChainDisruption



Round 5&6

Round 5&6 – Scenario



Round 5 - Results

Financial Statements - R5

Team	Credit ratings	Interest Rate (%)	Rank	Company valuation	Cumulative Net Income	Total sales	Gross Margin (%)	Net Margin (%)	ROE (%)	ROA (%)	D/E (%)	Mktg/S (%)	Round Net Income	Round Productivity	Round Sales per Team	CO2e (kg)	CO2e per Unit Sold (kg/unit)	CO2e per Sales (kg/€)
N	AAA+	6	1	229,902,849.28	8,815,118.72	17,875,897.21	74.23	49.313	29.566	26.101	13.277	0.138	1,642,713.33	94.375	3,280,305.36	2,035,332.69	0.77	0.11
T	AAA+	6	2	204,482,745.28	8,193,447.72	17,221,742.53	73.13	47.576	28.066	23.156	21.205	0.019	1,729,775.22	93.333	3,641,892.21	1,841,603.23	0.66	0.11
B	AAA+	6	3	177,551,783.20	7,071,324.30	14,806,653.10	74.859	47.758	25.191	22.344	12.739	3.078	842,952.63	95	2,203,506.60	1,965,120.70	0.93	0.13
K	AAA+	6	4	163,220,041.28	6,620,001.72	14,686,119.43	68.25	45.077	23.968	22.97	4.345	0.979	1,610,776.55	95.208	3,660,424.88	1,779,551.27	0.76	0.12
C	AA+	6.5	5	157,999,816.56	6,969,158.45	15,492,820.18	73.495	44.983	24.917	19.391	28.502	7.141	1,114,926.40	92.417	3,087,130.42	1,715,185.45	0.72	0.11
H	AAA+	6	6	136,628,252.56	5,261,177.19	12,869,247.40	69.186	40.882	20.034	18.608	7.662	0.403	1,054,231.74	89.56	2,776,738.65	2,897,029.22	1.28	0.23
E	A	8	7	133,347,981.80	5,363,649.09	15,876,205.59	71.657	33.784	20.345	15	35.63	0.226	1,936,981.25	90.724	4,078,749.00	2,509,639.12	1.04	0.16
J	AA-	7.25	8	120,842,507.95	4,316,992.56	14,104,167.12	70.96	30.608	17.052	13.615	25.244	0.335	907,755.89	92.268	2,657,344.95	2,612,553.85	1.12	0.19
F	BBB+	8.75	9	117,535,677.18	6,209,082.85	14,089,339.54	71.727	44.069	22.82	16.408	39.081	0.16	1,222,492.80	84.19	2,994,260.88	2,587,851.98	0.85	0.18
O	AAA+	6	10	114,648,101.92	4,712,837.58	11,764,706.30	66.473	40.059	18.329	13.707	33.718	0.006	995,820.17	82.578	2,549,594.70	2,007,528.57	0.91	0.17
U	AAA+	6	11	103,737,119.92	3,558,213.33	11,565,925.21	67.486	30.765	14.489	12.224	18.527	0	207,641.51	82.917	2,344,752.30	2,258,294.97	1.03	0.2
A	A	8	12	96,193,323.33	4,482,999.50	12,969,926.03	69.882	34.565	17.592	14.242	23.52	0.625	-510,620.37	93.333	1,181,222.10	2,892,887.40	1.3	0.22
D	AAA+	6	13	95,760,279.92	3,809,178.33	9,819,001.25	74.175	38.794	15.354	12.752	20.403	0.018	1,047,597.09	91.667	2,534,834.75	1,885,044.34	1.08	0.19
V	AA	7	14	48,780,064.95	1,952,836.31	8,340,760.78	63.896	23.413	8.508	6.663	27.687	0.226	732,943.43	83.197	2,144,553.33	1,527,424.64	0.95	0.18
G	AA	7	15	32,999,545.02	1,203,312.48	6,770,066.11	67.68	17.774	5.42	4.232	28.075	0.409	366,183.41	78.333	1,571,031.60	1,275,704.25	0.92	0.19
R	AA-	7.25	16	29,726,621.44	1,375,935.38	6,304,472.16	67.538	21.825	6.149	4.905	25.374	0.023	563,114.34	73.333	1,792,040.23	1,335,862.16	1.11	0.21
L	AA+	6.5	17	26,592,083.87	864,437.09	6,554,813.05	65.299	13.188	3.954	3.161	25.066	0	252,915.89	54.583	1,368,325.40	836,583.86	0.71	0.13
I	A-	8.25	18	13,922,870.86	564,813.20	6,138,611.80	68.315	9.201	2.619	2.084	25.702	0	-36,753.75	34.792	1,041,833.30	2,581,789.15	2.45	0.42
S	A	8	19	-10,769,163.20	-538,458.16	6,753,129.06	65.511	-7.973	-2.632	-1.862	41.3	31.044	55,939.90	34.583	1,080,572.31	1,543,122.10	1.14	0.23
Q	C	14	20	-17,096,276.51	-6,079,271.18	8,742,259.10	67.013	-69.54	-40.74	-12.87	216.59	0	204,440.58	58.382	2,194,560.70	2,121,475.85	1.21	0.24
M	A-	8.25	21	-37,290,044.28	-1,903,346.01	1,412,880.00	64	-134.7	-9.967	-7.024	41.892	0	-565,570.50	0	0	380,306.00	1.19	0.27
P	A-	8.25	22	-44,260,526.89	-2,259,131.06	856,080.00	64.335	-263.9	-12.06	-8.448	42.687	0	-566,342.40	0	0	230,170.00	1.2	0.27

Round 6 - Results

Financial Statements - R6

Team	Credit ratings	Interest Rate (%)	Rank	Company valuation	Cumulative Net Income	Total sales	Gross Margin (%)	Net Margin (%)	ROE (%)	ROA (%)	D/E (%)	Mktg/S (%)	Round Net Income	Round Productivity	Round Sales per Team	CO2e (kg)	CO2e per Unit Sold (kg/unit)	CO2e per Sales (kg/€)
N	AAA+	6	1	222,486,320.20	10,469,316.01	21,358,196.06	73.056	49.018	33.268	32.651	1.892	0.138	1,654,197.29	75.625	3,482,298.85	2,331,980.66	0.71	0.11
T	AAA+	6	2	192,549,049.20	9,347,452.46	20,246,536.28	72.336	46.168	30.801	26.483	16.308	0.02	1,154,004.74	94.167	3,024,793.75	2,177,695.04	0.64	0.11
B	AAA+	6	3	172,195,087.80	8,329,754.39	17,691,351.47	73.546	47.084	28.4	28.104	1.054	2.87	1,258,430.09	70.625	2,884,698.37	2,218,955.78	0.8	0.13
C	AAA+	6	4	167,931,254.60	8,304,062.73	19,030,917.43	72.232	43.635	28.338	24.377	16.249	6.665	1,334,904.28	91.083	3,538,097.25	1,966,856.13	0.62	0.1
K	AAA+	6	5	149,402,590.60	7,190,129.53	17,102,326.18	67.861	42.042	25.506	25.165	1.354	1.451	570,127.81	90.417	2,416,206.75	1,985,916.16	0.73	0.12
E	AA	7	6	140,322,506.18	6,600,237.84	18,800,499.79	71.365	35.107	23.914	19.054	25.507	0.303	1,236,588.75	53.345	2,924,294.20	2,707,435.50	0.93	0.14
A	AAA+	6	7	139,574,754.40	6,698,737.72	17,526,492.13	69.154	38.221	24.184	21.485	12.563	0.768	2,215,738.22	85.778	4,556,566.10	3,110,345.95	1.01	0.18
H	AAA+	6	8	125,386,749.40	5,889,337.47	15,020,832.60	68.224	39.208	21.902	21.342	2.627	0.363	628,160.28	92.543	2,151,585.20	3,349,299.81	1.27	0.22
J	AA	7	9	115,652,683.27	5,205,897.58	16,738,982.37	70.228	31.1	19.865	16.938	17.285	0.577	888,905.02	89.708	2,634,815.25	2,987,161.53	1.06	0.18
O	AAA+	6	10	111,636,242.80	5,526,812.14	14,155,325.30	66.065	39.044	20.835	15.638	33.23	0.005	813,974.56	82.421	2,390,619.00	2,341,089.07	0.89	0.17
F	A-	8.25	11	110,873,549.39	6,761,004.90	16,133,678.58	70.875	41.906	24.354	18.75	29.892	0.173	551,922.05	91.619	2,044,339.04	2,864,999.49	0.81	0.18
D	AAA+	6	12	104,693,259.40	5,079,662.97	12,702,253.85	73.534	39.99	19.477	18.472	5.441	0.022	1,270,484.64	68.333	2,883,252.60	2,245,818.34	0.98	0.18
U	AAA+	6	13	99,162,160.00	4,303,108.00	13,703,609.88	67.149	31.401	17.006	14.3	18.922	0.002	744,894.67	73.958	2,137,684.67	2,518,954.48	0.99	0.18
V	AA+	6.5	14	56,154,845.58	2,775,822.95	10,885,688.10	63.065	25.5	11.675	9.949	17.345	0.246	822,986.64	85.165	2,544,927.32	1,881,702.17	0.91	0.17
R	AA	7	15	33,949,405.27	1,852,217.29	8,026,241.80	66.678	23.077	8.105	6.999	15.809	0.022	476,281.91	71.667	1,721,769.64	1,579,582.23	1.03	0.2
G	AA+	6.5	16	31,409,552.74	1,423,263.46	8,226,195.11	66.33	17.302	6.347	4.98	27.443	0.4	219,950.98	57.5	1,456,129.00	1,559,213.25	0.93	0.19
I	A+	7.75	17	20,272,450.89	1,066,006.49	7,823,397.20	68.055	13.626	4.831	3.943	22.532	0	501,193.29	54.375	1,684,785.40	2,816,674.55	2.09	0.36
L	AA+	6.5	18	16,071,431.07	583,839.42	6,958,538.70	65.511	8.39	2.705	2.19	23.521	0	-280,597.67	10	403,725.65	882,201.36	0.7	0.13
S	A+	7.75	19	-6,064,558.47	-356,292.81	8,045,599.53	65.077	-4.428	-1.726	-1.227	40.616	26.057	182,165.35	53.125	1,292,470.47	1,800,540.95	1.13	0.22
Q	C	14	20	-14,242,213.18	-5,434,168.45	11,544,133.10	66.868	-47.07	-34.91	-11.3	209	0	645,102.73	17.378	2,801,874.00	2,423,078.35	1.08	0.21
M	BBB+	8.75	21	-38,774,001.41	-2,471,842.59	1,412,880.00	64	-175	-13.34	-9.318	43.178	0	-568,496.58	0	0	393,306.00	1.23	0.28
P	BBB+	8.75	22	-44,367,011.61	-2,828,396.99	856,080.00	64.335	-330.4	-15.57	-10.81	44.025	0	-569,265.93	0	0	243,170.00	1.27	0.28

FINAL RESULTS

ERPsim Sustainability Challenge 2025

T 
Central Michigan University

N 
Duy Tan University

B 
Tecnológico de Monterrey

ERPsim CHALLENGE 2025 MANUFACTURING SUSTAINABILITY

Thank you!

Learn more about ERPsim

erpsim.hec.ca erpsim@hec.ca