

ERPsim

Start of Term Webinar

Please Note

This webcast is being recorded and will be made available on the ERPsim website. Please be aware that questions you ask or discussions you participate in will be recorded as a part of the presentation.

By attending this online event you are giving your permission to being recorded. Participant names / photos / video (if connected to event via webcam) may be shared. If you do not wish to be recorded, please disconnect from the webcast at this time.

This presentation contain references to products of SAP SE, Dietmar-Hopp-Allee 16, 69190 Walldorf, Germany. The names of these products are registered and/or unregistered trademarks of SAP SE. SAP SE is neither the author nor the publisher of this presentation and is not responsible for its content.

Webinar
Online | January 7, 2025

ERPsimLab
HEC MONTRÉAL



Serious games to learn enterprise
systems and business analytics

Agenda

1. **Welcome**
2. **Highlights of 2024**
 - ▶ Business Builders
 - ▶ Maple Card Game
3. **ERPsim licensing, training, certification**
4. **ERPsim in 2025**
5. **Q&A**

Game-based Learning for ERP

ACADEMIC

20+ years in use
3 000+ faculty trained

Every year, more than
6 000+ simulations
are played by
25 000+ students
across
250+ universities
from around the world

COMMERCIAL

Many large organizations, such as Boeing, Coca-Cola, 3M, Kraft, Caterpillar, Pfizer and SAP, are using ERPsim to train their end-users on ERP systems.

BÂTON

RESEARCH

Several researchers have started using ERPsim to run experimental protocol in IS.

Visit
<http://erpsim.hec.ca/research>

WINNER OF THE

2013 Prix de l'innovation pédagogique Cidegef/FNEGE

2007 Majdi Najm Award

2006 HEC Montréal Award for teaching excellence for an assistant professor

2005 HEC Montréal Award for the use of technology in teaching

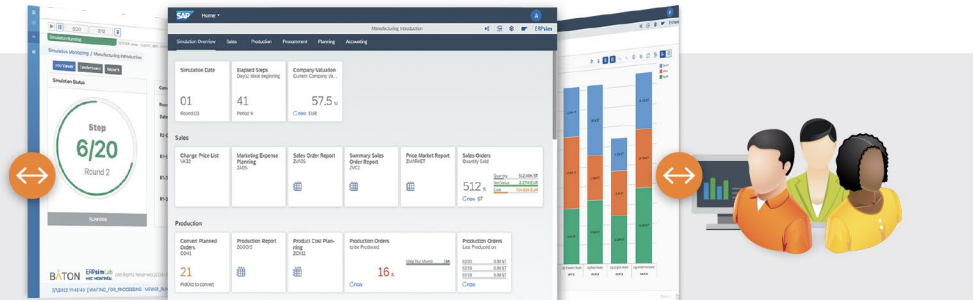
Highlights of 2024

- Launch of the new Business Builders game
- New Card Game to learn business processes concepts

ERPsim Lab Solutions

ERPsim

ERPsim
Simulator



MANUFACTURING

- INTRODUCTION
- EXTENDED
- ADVANCED
- SUSTAINABILITY



LOGISTICS

- INTRODUCTION
- EXTENDED
- PLATINUM
- SUSTAINABILITY



MAPLE

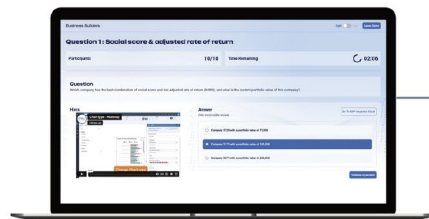
- INTRODUCTION

Maple Card Game

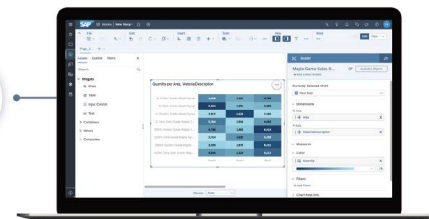


Business Builders

Gaming Platform



SAP Analytics Cloud



SAP System

Version

SAP S/4HANA

Supported UI

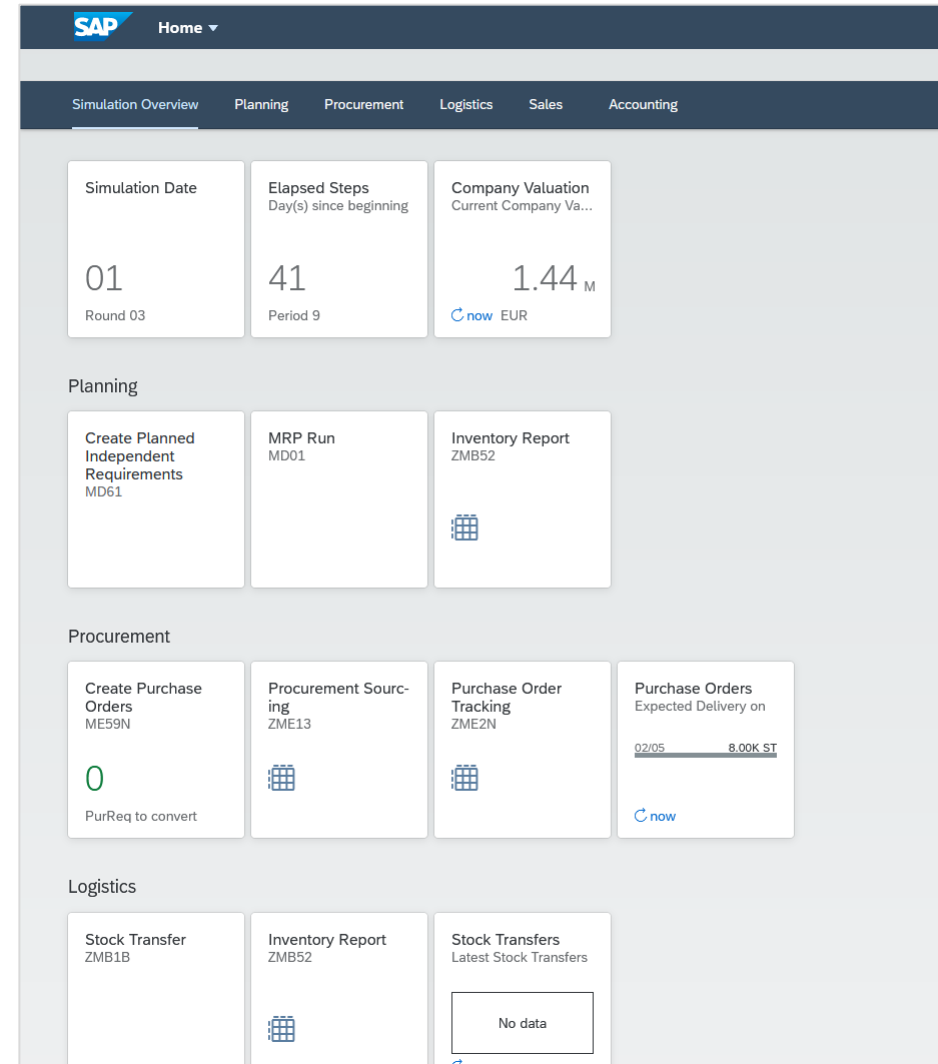
SAP Fiori and SAP GUI

Analytics

SAP standard reports
Smart Business
OData Service 2.0

Languages
(BETA)

English, French, Spanish,
German



SAP Fiori Launchpad configured for the Logistics Extended game

Job Aids, Slides, Guides, Videos

- All job-aids, slides and guides updated for academic year 2024-2025
- Available in English and French
- For videos, available with French, English, and Spanish subtitles



Manufacturing Introduction Game

User: **\$ 1 to \$ 9**
Initial password: **ERPSIM**

Adapted for Fiori and for SAP GUI with Fiori Visual Theme Activated
© ERPSim Lab, HEC Montréal
Last Update: July 12, 2021



Nut	
\$\$-F01	500g
\$\$-F11	1kg
Starting Inventory	30 000 units each
35% wheat	
35% oat	
30% nut	
1 box / 1 bag	



Blueberry	
\$\$-F02	500g
\$\$-F12	1kg
Starting Inventory	30 000 units each
35% wheat	
35% oat	
30% blueberry	
1 box / 1 bag	



Strawberry	
\$\$-F03	500g
\$\$-F13	1kg
Starting Inventory	30 000 units each
35% wheat	
35% oat	
30% strawberry	
1 box / 1 bag	



Raisin	
\$\$-F04	500g
\$\$-F14	1kg
Starting Inventory	30 000 units each
35% wheat	
35% oat	
30% raisins	
1 box / 1 bag	



Original	
\$\$-F05	500g
\$\$-F15	1kg
Starting Inventory	None
50% wheat	
50% oat	
1 box / 1 bag	



Mixed	
\$\$-F06	500g
\$\$-F16	1kg
Starting Inventory	None
30% wheat	
30% oat	
40% fruits & nuts	
1 box / 1 bag	

CUSTOMERS	
	DC 12: Grocery Chains Payment Time: 10-20 days
	Approximate Market Size €360 000 per team per week
SUPPLIERS	
Lead time (days)	1-5
Payment time (days)	20
PRODUCTION CONSTRAINTS	
Capacity (units/day)	16 000
Setup time (hours)	8
Minimum/Maximum Lot Size	16 000/16 000

STORAGE CAPACITY AND COSTS		
Product type	Current space	Cost per additional 50 000 units*
Finished products	250 000 boxes	€500/day
Raw materials	250 000 kg	€1 000/day
Packaging (bags and boxes)	750 000 units	€100/day
FIXED COSTS (€ paid each 5 days)*		
Labor		10 000
Manufacturing overhead		7 500
S, G & A		20 000
Depreciation (Building)		1 250
Depreciation (Equipment)		33 333

*Billed automatically



Business Builders

gives educators the opportunity to prepare future leaders for an increasingly complex and data-driven world.



HEC MONTRÉAL



Enhanced visualization and data storytelling skills



Scenarios driven by data, which replicate real-world business challenges



SAP and academic collaboration



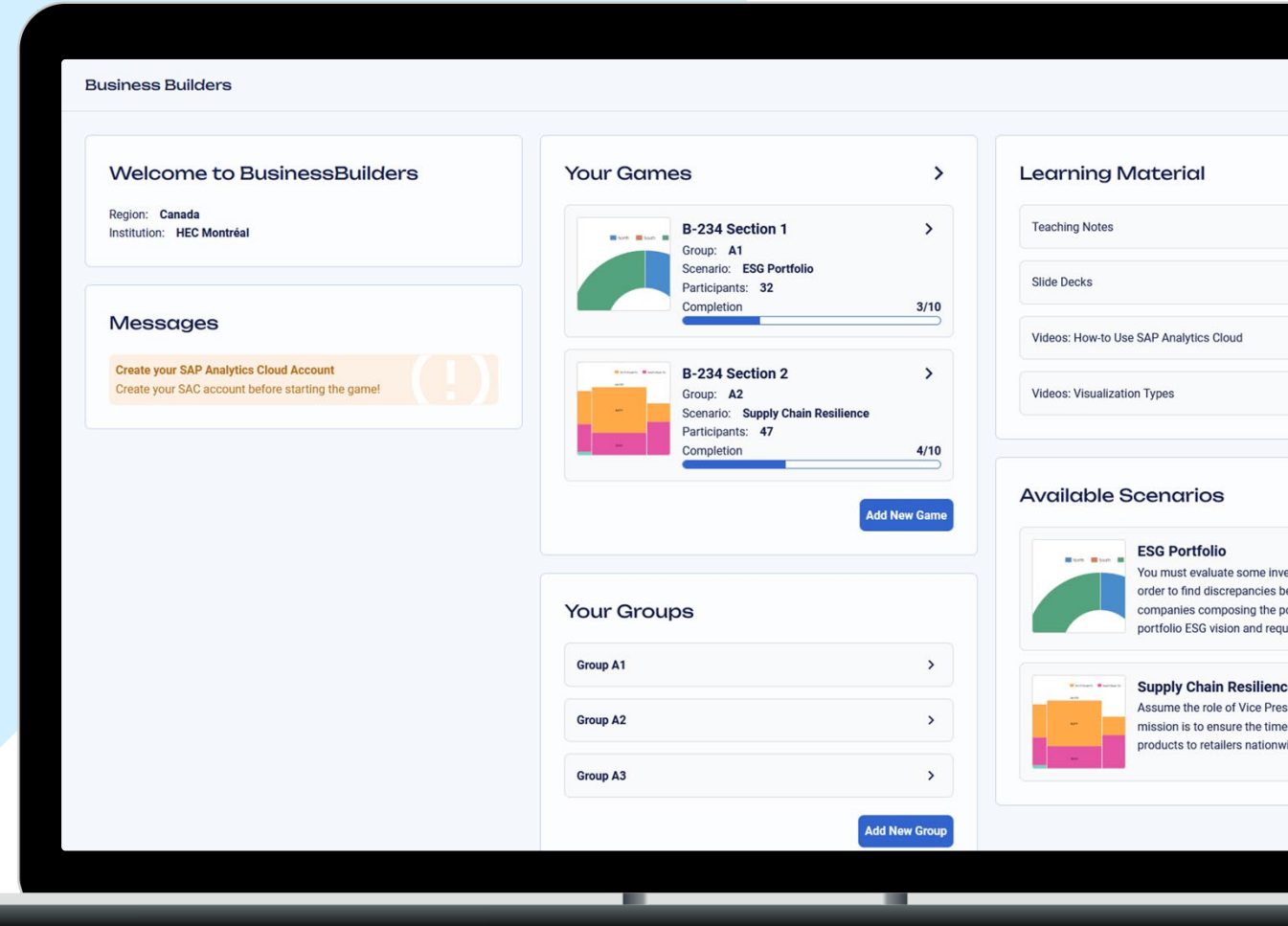
Students gain the practical skills to succeed in future careers



Competitive advantage in the job market



Free, cloud-based offering for educators and students around the world



Welcome to Business Builders

Region: North America
University: HEC Montréal

Messages

SAP Analytics Cloud

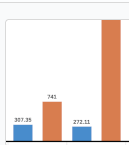
Create your SAP Analytics Cloud Account

Business Builders Training

Learn how to get started with Business Builders. You can book one of the available training sessions now.

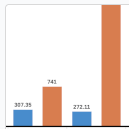
Register to a training session

Your Games



Event Test 2

Group: Group JFM
Game ID: Supply Chain Resilience - Stage 2
Participants: 1
Completion ● 2/10



Event Test 1

Group: Group JFM
Game ID: Supply Chain Resilience - Stage 1
Participants: 1
Completion ● 0/10

Add New Game

Your Groups

Group JFM

Add New Group

Learning Material

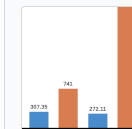
Teaching Notes

SAP Analytics Cloud User Guide

SAP Analytics Cloud Data Visualization Handbook

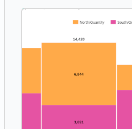
Training Slides - Maple Dataset

Available Scenarios



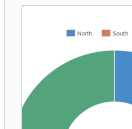
Supply Chain Resilience

Assume the role of Vice President where your mission is to ensure the timely delivery of products to retailers nationwide.



International Expansion

Delve into survey data to evaluate the potential of a company's flagship product to identify promising markets for a new product variant.



Sustainability Portfolio

You must evaluate some investment portfolio in order to find discrepancies between the companies composing the portfolio and the portfolio ESG vision and requirements.

From the instructor's dashboard, manage your groups of students and game, access SAP Analytics Cloud and learning material

Question O3:

Participants

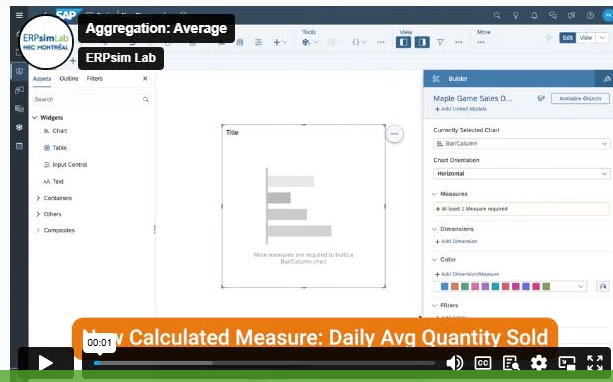
0/1

[Create your SAP Analytics Cloud Account](#)

Question

What is the average 'Days until Deadline' of our shipments going through the Panama Canal and that are supposed to reach Pittsburgh by October 15th inclusively? Calculate also the average waterway waiting time and the new waterway waiting time, considering that the transit time to go through the Panama Canal increased fivefold.

Show Hint #1



Show Hint #2

Answer

Enter the average 'Days Until Deadline' (days):

Average time (days)

Enter the old average waterway waiting time (days):

Average time (days)

Enter the new average waterway waiting time (days):

Average time (days)

[Submit my answer](#)

All students are presented the same question at the same time.

Questions can require one or many answers, each in multiple formats (number, multiple-choice, matrix).

Hints are provided, either in the form of a short text or video.

End of question O2

Participants

1/1

Actions

Show Results

Solution

Solution - Question 2

How many ongoing shipments were scheduled to reach the distribution center in Pittsburgh by October 15th inclusively?

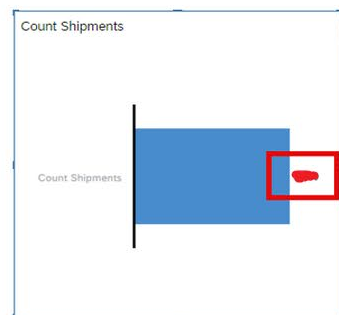
Answer:

Number of shipments : 🍷

Notes:

There are many ways to do the filtering on the dimension, you can use the Filters or Input Control features.

At the end of the questions, students will see their scores, and the instructor will be able to show (or not) the solution.



1

Builder

Query 2 - Ongoing Sh... Available Obj

+ Add Linked Models

Currently Selected Chart

Bar/Column

Chart Orientation

Horizontal

Measures

Count Shipments

+ Add Measure

Dimensions

+ Add Dimension

Color

Filters

Arrival_ExpectedDistributionCenterUnloadingDate

Start to Oct 15, 2023

Calculation Editor

Type

Aggregation

Name (ID)

Count Shipments

Properties

Operation

COUNT DIMENSIONS

Aggregation Dimensions

Shipment_ID

Set Date Range for Arrival_ExpectedDistributionCenterUnloadingDate

Type

Dynamic Fixed

Hierarchy Year, Quarter, Month, Day

2023 2024 2025

Range 1 : Start - Oct 15, 2023

Granularity

Day Start to Oct 15, 2023

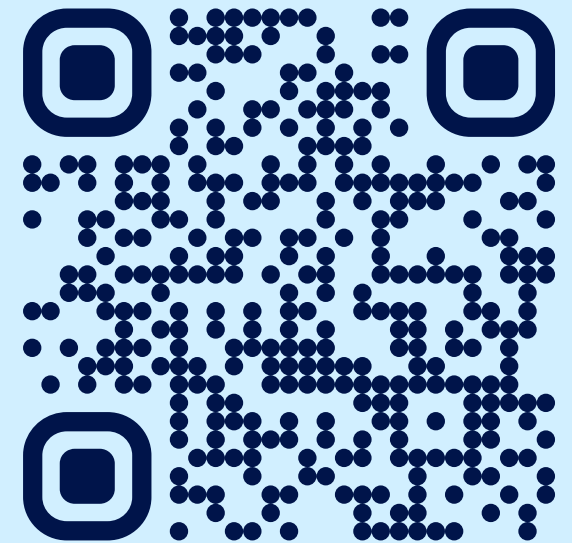
Business Builders

Get engaged and bring it to your classroom!

- ✓ Free of charge
- ✓ No membership needed
- ✓ No programming or experience required



HEC MONTRÉAL



Scan the QR code
and start your game
today!

businessbuilders.games

Maple Card Game

Hands-On Learning

Enable students to experience fundamental business processes (buying, producing, selling) firsthand, without relying on IT

Highlight Efficiency

Expose the significant time spent on information management compared to actual value creation, sparking discussions on efficiency

Understand Value Creation

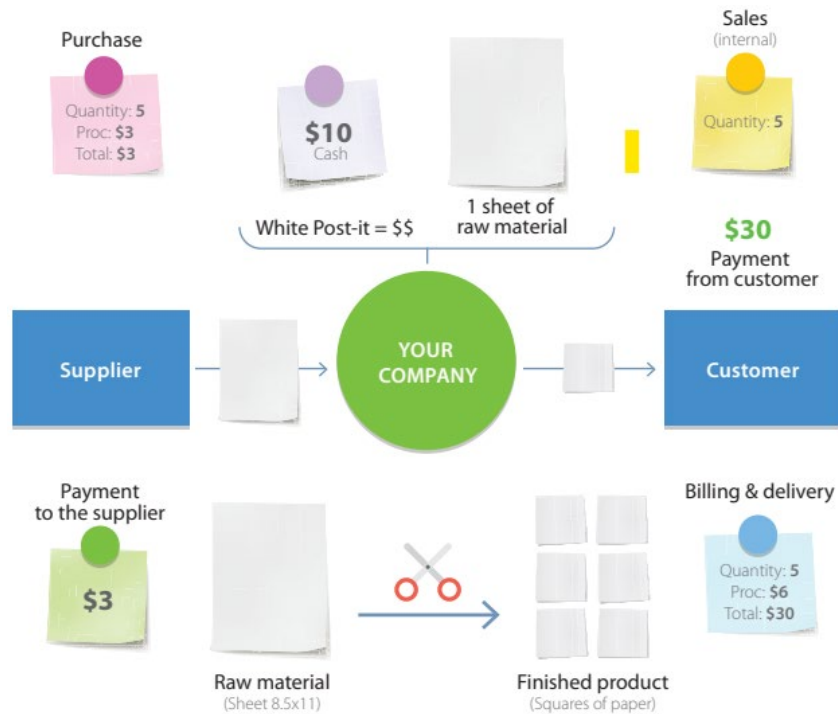
Help students differentiate between creating value through product transformation and managing information flow

Illustrate Information Flow

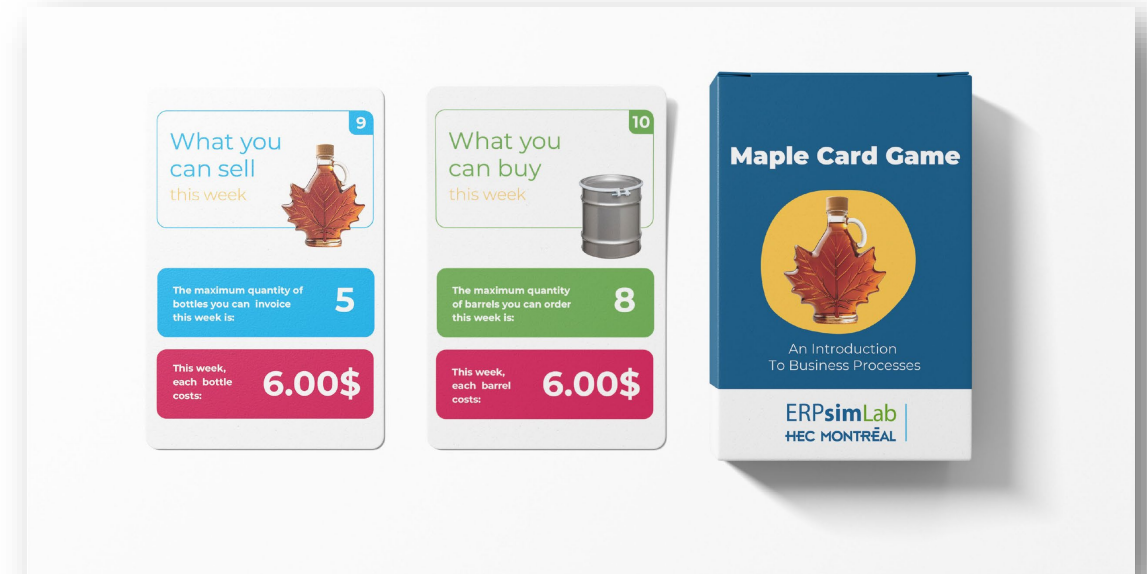
Showcase the intricate nature of information flow within business operations, emphasizing the critical role of effective information systems

Paperless: A New Leaf for the Game

The Paper Game



Maple Card Game



Rethink Your Classroom: The Power of Play



"The Maple Card Game is the perfect gateway for introducing students to the importance of information systems before diving into ERPsim to explore SAP in depth"

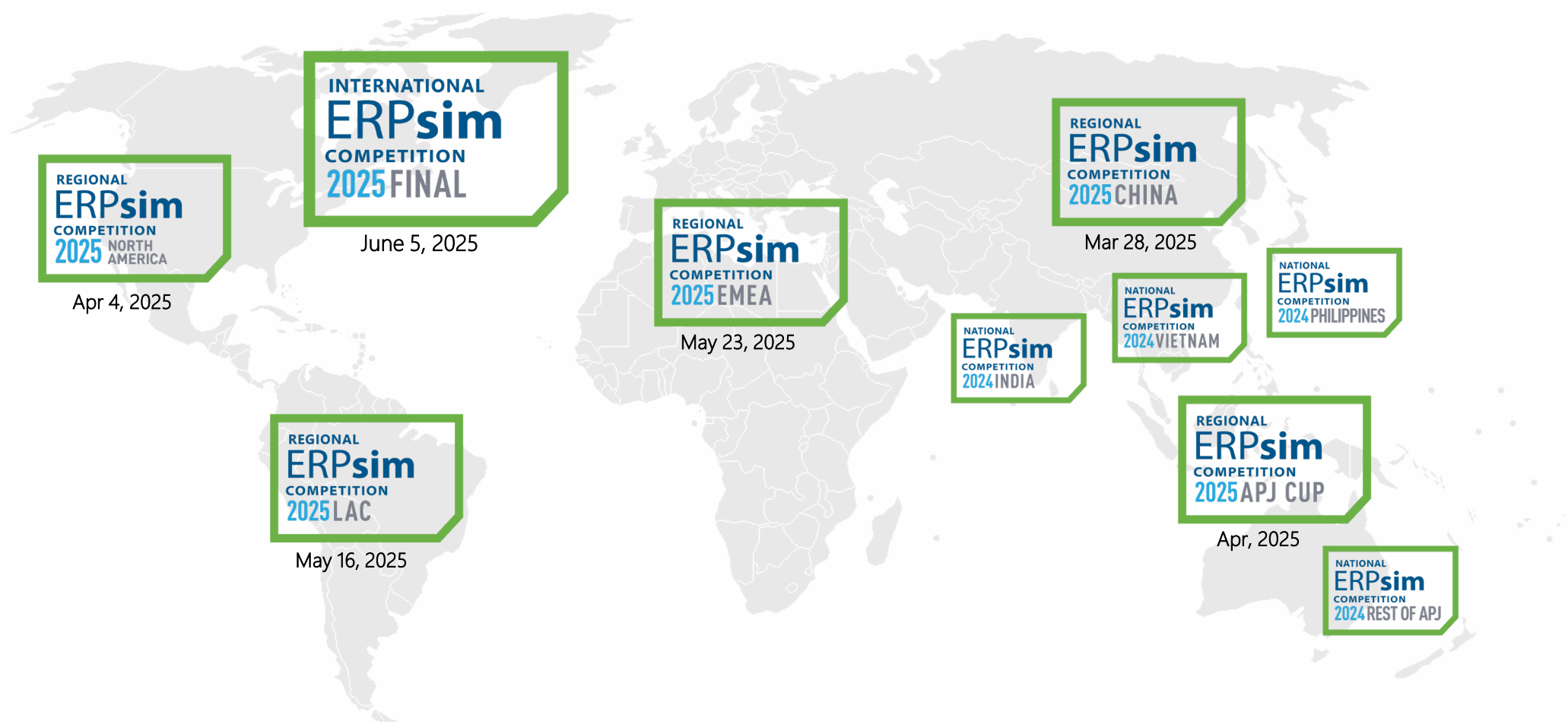
Maple Card Game



<https://erpsim.hec.ca/maplecardgame>

- Engaging hands-on learning
- Foundation for advanced learning
- Sustainable and cost-effective
- Real-World business scenario

ERPsim competitions 2025



Pricing and Support

Does not include UCC hosting fees

ERPsim License

\$57 CAD per student,
valid for one course
(max. 6 months)

Effective price from August 1st 2024 to July 31st 2025.
May change at anytime.
Visit <https://ersim.hec.ca/buy> for conditions.

In the event of a disparity between the price presented on this slide and the one on <https://ersim.hec.ca/buy>, the latter shall prevail.

The license includes

- For the student:
 - i. Access to the simulation game
 - ii. Access to the pedagogical material (job aids, participant's guide, slides, self-training videos, etc.)
- For the professor:
 - i. Ability to start and manage any of the game scenarios, unlimited for the duration of the course
 - ii. Access to technical and pedagogical support from HEC Montréal



ERPsim Licensing Options

Does not include UCC hosting fees

Individual licenses

Purchased directly by students
Valid for one course, for the full semester

Bulk purchase

Pricing adjusted to UN Human Development Index
Inquire for a quote

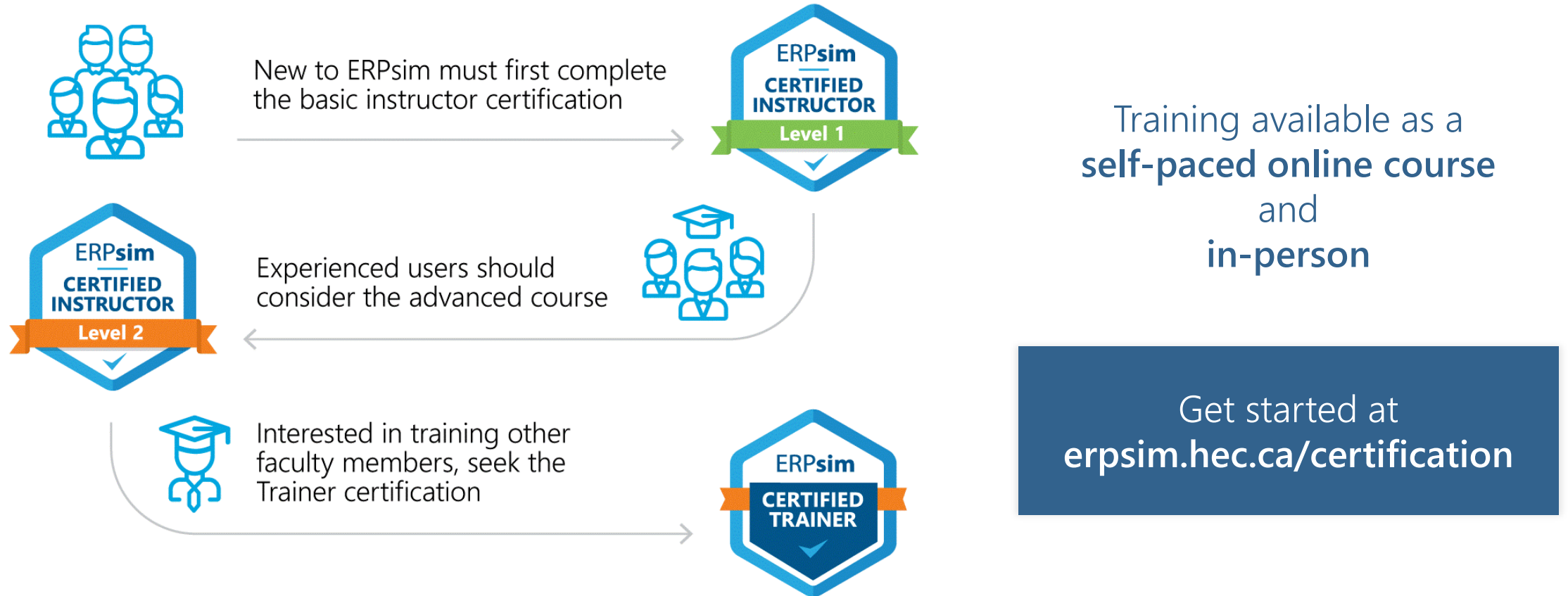
Event-based pricing

For a short-term use (competitions, gameathons, open house days, recruitment days, intra-university games, intro courses)
Limited access to instructional assets

Free use for research

For qualified experimental research

ERPsim Training and Certification



FACULTY HIGHLIGHT SERIES



- A series of interviews showcasing the work of faculty members
- Learn more about their experience, teaching best practices, research projects, and tips and tricks using ERPsim
- A new entry showcased every two weeks!

erpsim.hec.ca/faculty-highlight-series

2025 ERPsim User Group Meeting

Save the Date

August 11-13, 2025

At HEC Hélène-Desmarais (downtown) campus
Montréal, Canada

Note that AMCIS 2025 will also happen in
Montréal on August 14-16, 2025!

FEB
7



ERPsim Sustainability Challenge 2025

Online event

Friday, February 7, 2025 at 10:00 AM EST

APR
4



ERPsim North America Competition 2025

Online event

Friday, April 4, 2025 at 12:00 PM EDT

MAY
16



ERPsim LAC Competition 2025

Online event

Friday, May 16, 2025 at 12:00 PM EDT

MAY
23



ERPsim EMEA Competition 2025

Online event

Friday, May 23, 2025 at 9:00 AM EDT

Questions

Thank You!

Website: erpsim.hec.ca

Email: erpsim@hec.ca